

2007/11/06 p.c. agriculture & land affairs



Xolile  
Ncwane

**Presentation to the  
Portfolio Committee on Agriculture and Land Affairs**

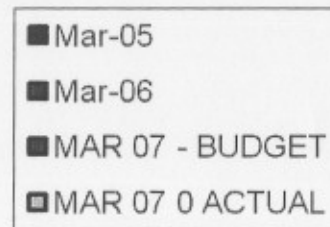
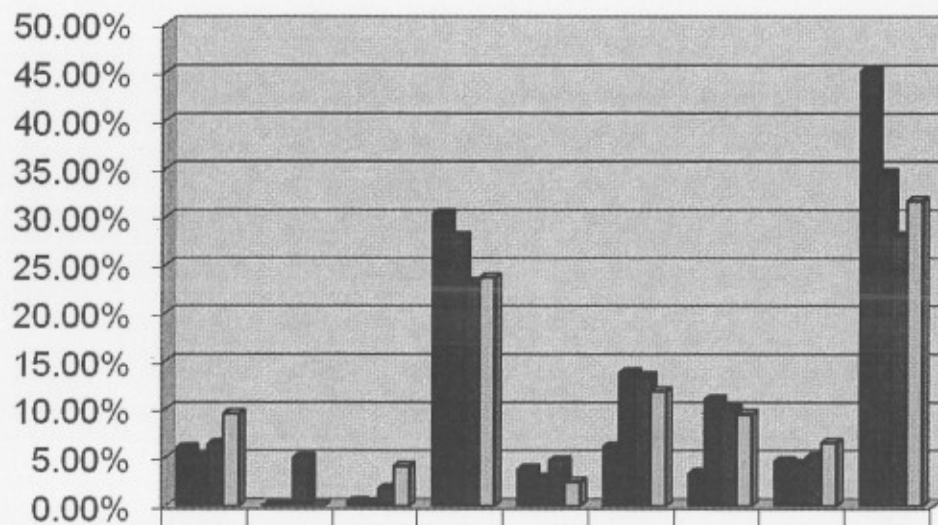
**6 November 2007**

**by  
George Mothoa**

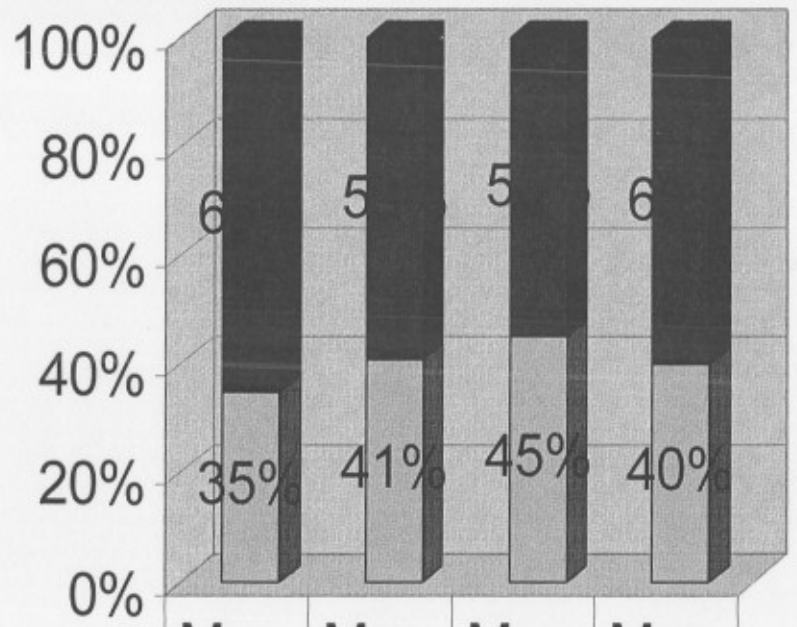


	Page
• Performance review 2006/2007 financial year	3
○ Portfolio Provincial spread	4
○ Portfolio mix: Mortgage vs Equity	5
○ Sectoral mix: Agriculture vs Eco-Tourism	6
○ Banks and other RFI's participation	7
○ New approved projects	8
○ LREF financial performance	9
• Key focus areas for 2007/2008 financial year	10
• Strategic initiatives	11
○ Khula/Mafisa Fund	12
○ Khula/Akwandze Fund	14
○ Local Enterprise Fund	15

- 
- Portfolio Provincial spread
  - Portfolio mix: Mortgage vs Equity
  - Sectoral mix: Agriculture vs Eco-Tourism
  - Banks and other RFI's participation
  - New approved projects
  - LREF financial performance



	EC	FS	GP	KZN	LP	MP	NC	NW	WC
■ Mar-05	6.0	0.0	0.4	30.	3.8	6.1	3.4	4.6	45.
■ Mar-06	5.0	0.0	0.3	28.	2.9	13.	11.	4.3	34.
■ MAR 07 - BUDGET	6.4	5.0	1.8	23.	4.7	13.	10.	5.0	28.
□ MAR 07 0 ACTUAL	9.5	0.0	4.0	23.	2.5	11.	9.4	6.4	31.



	Mar-	Mar-	Mar-	Mar-
■ EQUITY	65%	59%	55%	60%
■ MORTGAGE	35%	41%	45%	40%

