

## DIGITAL MIGRATION - CABINET DECISIONS



the doc

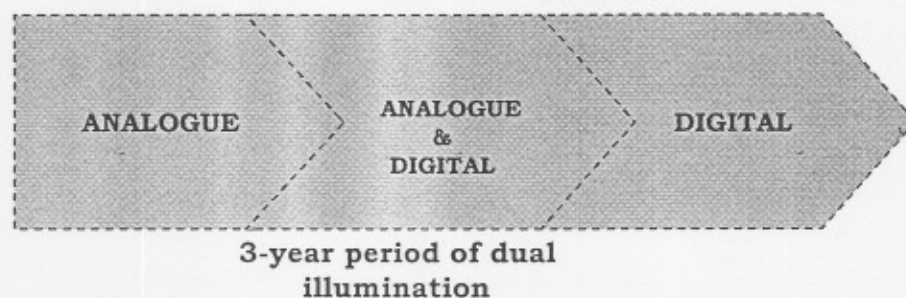
Department:  
Communications  
REPUBLIC OF SOUTH AFRICA

### ① Dual illumination period

Current

**Approved:**  
Digital Switch-on  
date: 1 Nov 2008

**Approved:**  
Analogue Switch-off  
date:  
1 Nov 2011



19

## SA's performance in 2005-2006 in relation to those of the comparable countries



the doc

Department:  
Communications  
REPUBLIC OF SOUTH AFRICA

	COUNTRIES	OVERALL RANKING (out of 115 countries)	ACCESS		UPTAKE (Readiness)			USAGE		
			Infra- structure	Political & Reg. Env.	Ind	Bus	Gov	Ind	Bus	Gov
1	Korea (Rep. of)	14	24	28	19	20	4	5	14	8
2	Malaysia	24	60	17	22	24	12	44	24	7
3	<b>South Africa</b>	37	59	<b>23</b>	<b>62</b>	25	38	<b>61</b>	<b>36</b>	<b>36</b>
4	India	40	98	30	50	29	28	114	27	32
5	Brazil	52	55	61	70	34	42	52	35	33

- ① According to the WEF, South Africa, against comparable countries, was ranked second only to Malaysia in the area of **ICT Political and Regulatory Environment**, performing better than Korea
- ② The single common factor that countries performing better than South Africa share, is that the uptake and usage of ICTs by the governments is far better than that of business.
- ③ South Africa performs badly in respect of the areas of **infrastructure (availability/access), uptake (readiness) and usage** and considerable intervention in these areas are needed.

20

### INCREASING ACCESS, UPTAKE AND USAGE OF ICTs



the doc

Department:  
Communications  
REPUBLIC OF SOUTH AFRICA

- ① The availability of ICT infrastructure **to support efficient, effective, speedy and on-time government service-delivery** is receiving greater attention through the **Thusong Post Offices**
- ① We will therefore attend to priorities identified in FOSAD Clusters **with a view to ensuring that our work can better support the priorities of government as a whole.**
- ① This year we are therefore putting even more emphasis on **increasing the uptake and usage of ICTs by government, the public and SMMEs**

21

### USING 2010 TO ACCELERATE DEVELOPMENT OF THE ICT SECTOR



the doc

Department:  
Communications  
REPUBLIC OF SOUTH AFRICA

- ① With the 2010 FIFA World Cup on our horizon the increased investment to ensure robust, reliable and affordable ICT infrastructure will be matched by increased usage of ICT by government facilitated by the Institutional mechanisms adopted by the Cabinet.

22

## Decisions taken by Cabinet



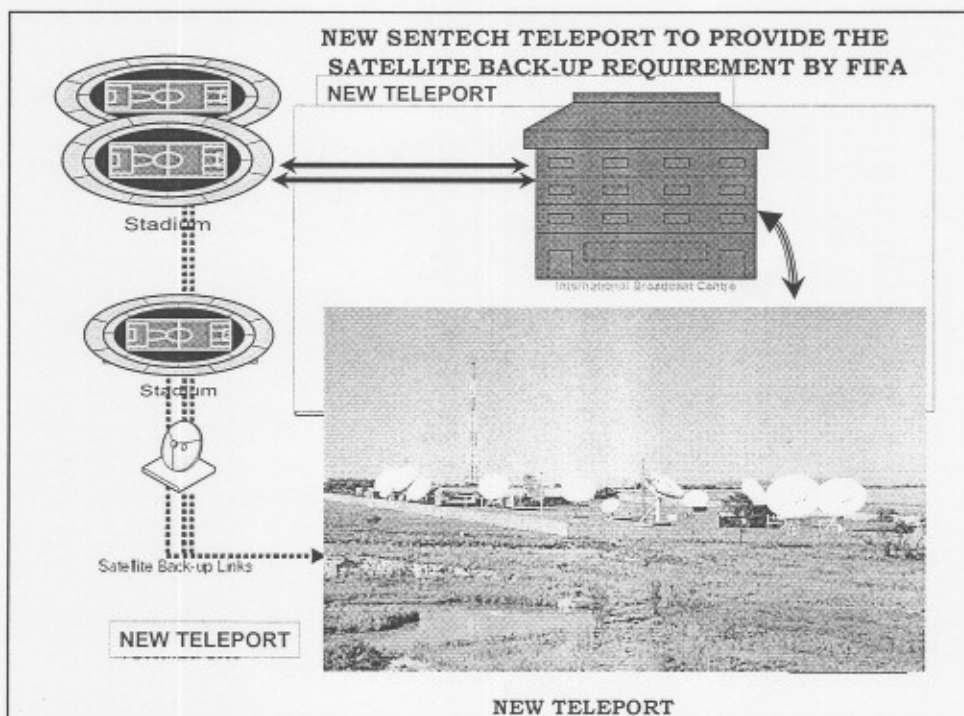
the doc

Department:  
Communications  
REPUBLIC OF SOUTH AFRICA

### ① February 2007 Cabinet meeting:

- ① **Noted** progress with regard to the fulfilment of **ICT guarantees in preparation for the 2010 FIFA World Cup**.
  - A **service provider** will be appointed to **provide adequate telecommunications** for the transportation of signals to and from the stadia.
  - A **second Sentech teleport** will be built to provide the satellite link as back-up to the telecommunications infrastructure required for the 2010 FIFA World Cup.
  - An **International Broadcast Centre** which will be established will serve as a legacy project for local content generation and development beyond 2010. The final site for the Broadcast centre will be determined by Cabinet in the near future.

23





the doc

Department:  
Communications  
REPUBLIC OF SOUTH AFRICA

# BUDGET

25

## SUMMARY OF ECONOMIC CLASSIFICATION



the doc

Department:  
Communications  
REPUBLIC OF SOUTH AFRICA

Economic Classification	2006/07			2005/06	
	Adjusted Appropriation	Estimated Expenditure	Variance	Final Appropriation	Actual Expenditure
Current payments	307 678	307 678	0	265 490	263 931
Transfers and subsidies	1 007 487	1 006 609	878	754 698	754 607
Payments for capital assets	7 140	7 326	-186	11 495	11 465
<b>TOTAL</b>	<b>1 322 306</b>	<b>1 321 613</b>	<b>692</b>	<b>1 031 683</b>	<b>1 030 003</b>

26

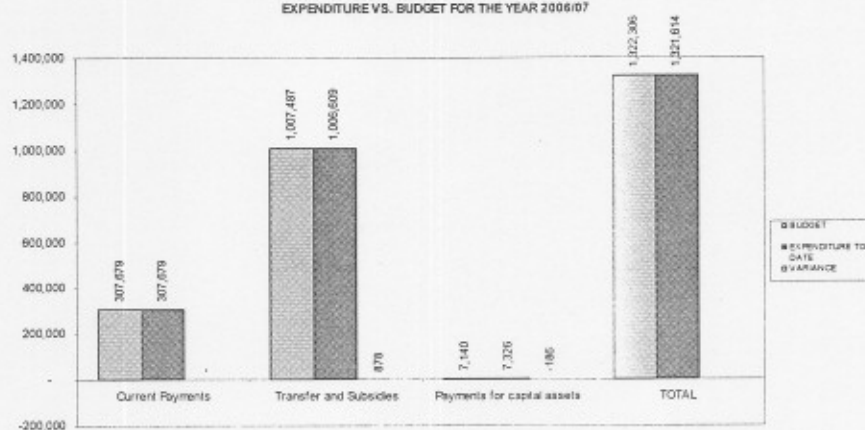
# Summary of Economic Classification 2006/07



the doc

Department:  
Communications  
REPUBLIC OF SOUTH AFRICA

EXPENDITURE VS. BUDGET FOR THE YEAR 2006/07



27

# Details of transfer payments for 2006/07



the doc

Department:  
Communications  
REPUBLIC OF SOUTH AFRICA

	Adjusted Appropriation Act R'000	Estimated Transfer R'000	Variance
USAASA	20 100	20 100	-
USF	31 164	31 164	-
ICASA	201 538	201 538	-
NEMISA	19 199	19 199	-
SAPO Subsidy	351 439	351 439	-
Sentech	100 000	100 000	-
SABC: Public Broadcaster	203 482	203 482	-
SABC: Channel Africa	31 393	31 393	-

28



# Details of transfer payments (...continue)



the doc

Department:  
Communications  
REPUBLIC OF SOUTH AFRICA

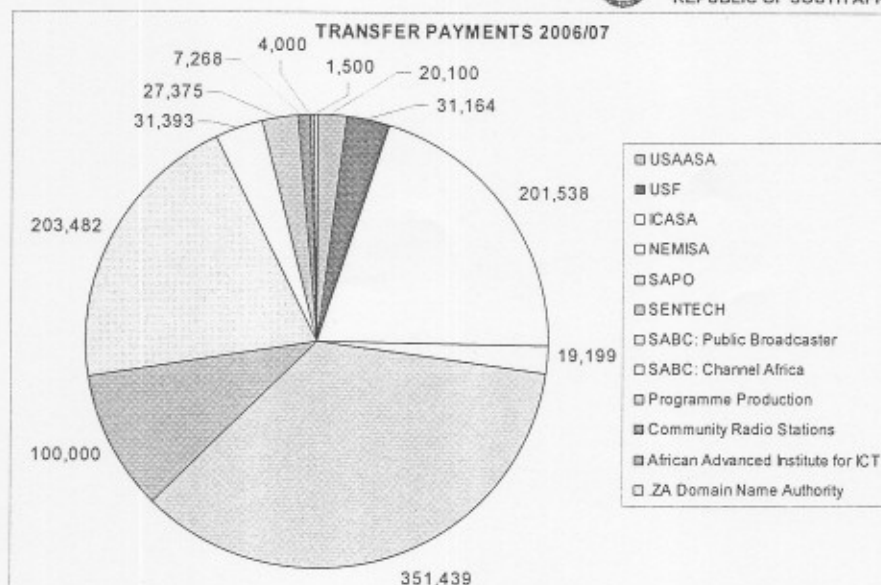
	Adjusted Appropriation Act R'000	Estimated Transfer R'000	Variance
SABC: Programme Production	29 026	28 334	692
SABC: Community Radio Stations	10 870	10 870	-
.za Domain Name Authority	1 500	1 500	-
Meraka Institute	4 000	4 000	-

29



the doc

Department:  
Communications  
REPUBLIC OF SOUTH AFRICA





- ① The Department's approved budget allocation for the 2006/07 financial year amounted to R1,322,306 million made up of a baseline allocation of R1,280 billion and Adjustment Estimates allocation of R42,112 million.
- ① Estimated spending for the 2006/07 financial year is R1,321,613 million which will result in an under-spending of R0,692 million (representing 0,0005% of the total budget)

**MTEF Baseline allocation –  
Programmes**



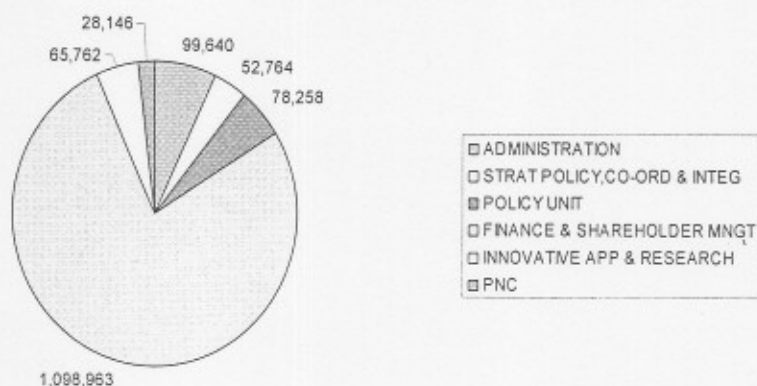
PROGRAMME	2007/08 R'000	2008/09 R'000	2009/10 R'000
Governance and Administration	99 640	109 281	116 556
ICT International Affairs and Trade	52 764	56 531	63 800
ICT Policy Development	78 258	81 552	84 273
Finance and ICT Enterprise Development	1 098 963	1 127 100	1 138 784
ICT Infrastructure Development	65 762	72 684	81 134
Presidential National Commission	28 146	29 745	32 694
Total	1 423 533	1 476 894	1 517 241



the doc

Department:  
Communications  
REPUBLIC OF SOUTH AFRICA

PROGRAMMES 2007/08



33

### MTEF Baseline allocation – Economic Classification



the doc

Department:  
Communications  
REPUBLIC OF SOUTH AFRICA

ECONOMIC CLASSIFICATION	2007/08 R'000	2008/09 R'000	2009/10 R'000
Current Payments	320 426	352 742	384 471
Transfers and Subsidies	1 095 564	1 115 982	1 123 743
Payments for Capital Assets	7 543	8 170	9 027
Total	1 423 533	1 476 894	1 517 241

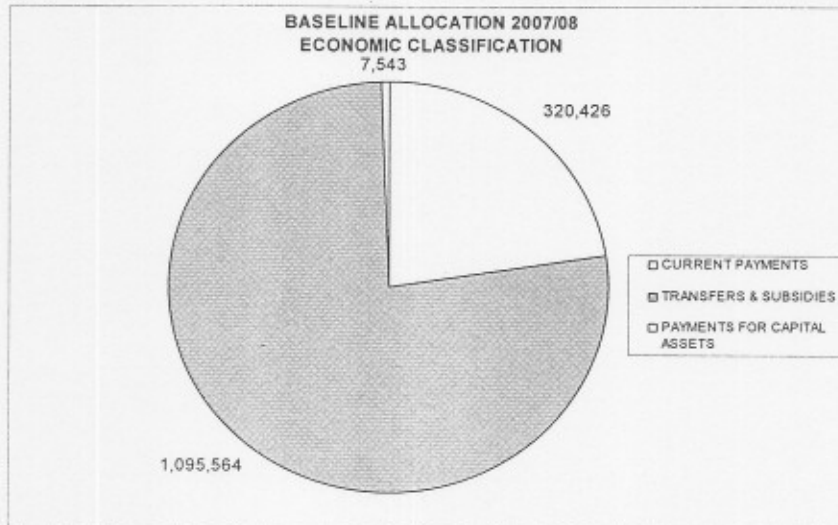
34





the doc

Department:  
Communications  
REPUBLIC OF SOUTH AFRICA



the doc

Department:  
Communications  
REPUBLIC OF SOUTH AFRICA

### MTEF Baseline allocation – Transfers

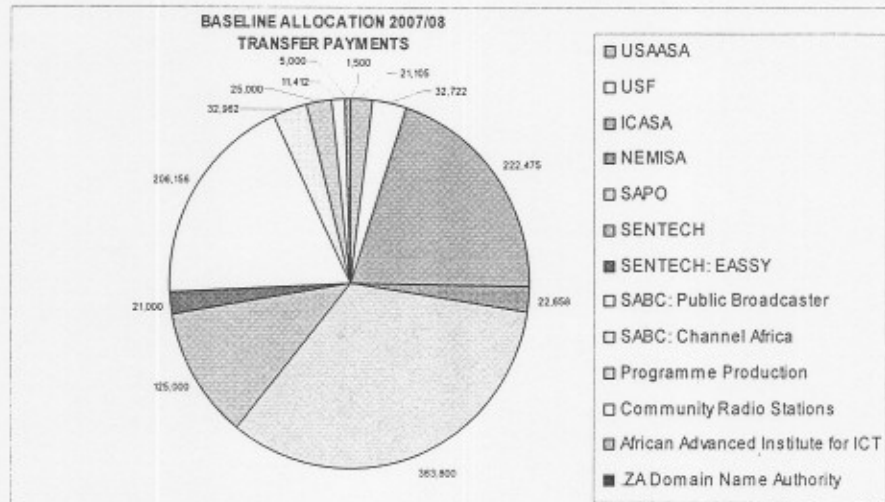
PORTFOLIO ORGANISATION	2007/08 R'000	2008/09 R'000	2009/10 R'000
USAASA	21 105	22 304	23 495
USF	32 722	34 581	36 427
SENTECH	125 000	118 000	75 000
SENTECH – EASSy	21 000		
SAPO: Subsidy	363 800	371 600	383 092
NEMISA	22 658	25 303	29 059
ICASA	222 475	242 272	263 607
SABC: Public Broadcaster	206 156	217 866	225 485
SABC: Channel Africa	32 962	34 834	36 694

36



the doc

Department:  
Communications  
REPUBLIC OF SOUTH AFRICA



37



the doc

Department:  
Communications  
REPUBLIC OF SOUTH AFRICA

**THANK YOU**

38