

PROVINCIAL VEHICLES FOR REPLACEMENT

REG. NO.	MODEL	KM	CONDITION
NXR 114 GP	TOYOTA CONDOR		MECHANICAL PROBLEM
NSL 167 GP	4X4 MAZDA	150000	EXCEED REPLACEMENT KM
DHT 012 GP	4X4 NISSAN	150000	EXCEED REPLACEMENT KM
HYW 849	4X4 NISSAN	150000	EXCEED REPLACEMENT KM
<u>other</u>			

Inter-Government Stakeholders

Forum / Stakeholder	Annual Number of Meetings Scheduled	Meetings Attended	Last Meeting	Role / Responsibility	Comments
Premier Inter'Govt Forum	2	1	2006/04	Permanent Member	
Accommodation Forum [DPW & DHA]	4	3	2006/7/02	Client	
JCPS CLUSTER	12	2	2007/02	Permanent Member	
Prov Eco Aff & Tou	TBA	1	2007/02	Assist with Security Plan Dev	
SAPS Organised Crime	Ongoing	3	2007/03	Client	Syndicate
National Intelligence Agency	Ongoing	3	2006/7/03	Client	Syndicate
BCOCC	12	1	2007	Permanent Member	
Municipality	Ongoing	1	2007/3	Accommodation	
Dikgatlong Municipality	At Municipality request	1	2006/10	DHA Service Delivery	



home affairs

Department:
Home Affairs
REPUBLIC OF SOUTH AFRICA

Caring, compassionate and responsive

Inter-Governmental Stakeholders [continued]

Phokwane Municipality / SASSA Stakeholder Meeting	Per invitation	1	2007/02	Demarcation Cross Boundary Areas Meeting
Refugee / Xenophobia Meeting	On a need basis	1	2007/01	Prieska Xenophobia Meeting convened by Human Rights Commission at the request of DHA
Portnolloth Municipality MPCC Meeting	On a need basis	1	2007/02	Recipient of allocated office accommodation within the MPCC as to increase services access to communities there.
Botswana & RSA Bi-Laterals	Bi-Monthly	1		Discuss border control operational issues of mutual concerns
Namibia & RSA Bi-Laterals	Bi-Monthly	1		Discuss border control operational issues of mutual concerns



home affairs

Department:
Home Affairs
REPUBLIC OF SOUTH AFRICA

Caring, compassionate and responsive

National Immigration Branch

INSPECTORATE

- THE REGION CONSISTS OF FIVE INTERNAL TRACING UNITS RESPONSIBLE FOR INTERNAL TRACING, INVESTIGATIONS, DEPORTATIONS AND PROSECUTIONS.
- KIMBERLEY REGIONAL OFFICE (2 plus 1 trainee)
- UPINGTON REGIONAL OFFICE (2 male and female)
- SPRINGBOK DISTRICT OFFICE (1 female)
- KURUMAN DISTRICT OFFICE (2 - female and male but male on suspension)
- DE AAR DISTRICT OFFICE (1 male)

- ***PAMPIERSTAD ESTABLISHMENT DOES NOT INCLUDE NIB***
- ***PRIESKA ESTABLISHMENT DOES NOT INCLUDE NIB***
- ***POSTMASBURG ESTABLISHMENT DOES NOT INCLUDE NIB***
- ***NIB INFORMED AND AWAITING RESPONSE***



home affairs

Department:
Home Affairs
REPUBLIC OF SOUTH AFRICA

Caring, compassionate and responsive

National Immigration Branch

- **Statistics – Permitting (TRP's)**
April 2006 to February 2007

- Administering permitting is facilitated by officials from Regional and District offices and approved jointly by the CIS, Control IO and one Chief IO as a Committee.

- Approval of TRP permits is done at Uppington and Kimberley and PR permits is centralized.

• Visitors Permit	194
• Accompany spouse Permits	89
• Relative Permit	23
• Business Permit	19
• Work Permits	44
• Study Permits	43
• Treaty	4
• Total	416



home affairs

Department:
Home Affairs
REPUBLIC OF SOUTH AFRICA

Caring, compassionate and responsive

National Immigration Branch

- **Statistics – Permitting
April 2006 to February 2007**

• Permanent residence apps.	27
• TRP applications	24
• Naturalization / Citizenship	8
• Resumption of Citizenship	39
• Determination of Citizenship	445
• Renunciation of Citizenship	4
• Total	547



home affairs

Department:
Home Affairs
REPUBLIC OF SOUTH AFRICA

Caring, compassionate and responsive

NIB Joint Operations: Apr 2006- Feb 2007

- **Alexander Bay**

Inspection and road block were conducted in co-operation with SAPS Inspectorate Springbok, Upington, Kimberley, De Aar and Kuruman in the Port Nolloth area. Twelve arrests were made.

- **Violsdrift**

Three arrests were made during an operation on the border in co-operation with SAPS, SARS and Immigration.

- **Nakop**

Nine arrests were made during three joint operation. SAPS, SARS, and Immigration participated.

- **Diamond Field and Kalahari Region**

Sixty eight arrests were made during two operations. SAPS and Immigration participated.

- Capacity strategic consideration have been to pool inspectorate personnel with Free State, North West and Northern Cape for joint rotational operations in respective provinces by way of mitigating capacity therein



home affairs

Department:
Home Affairs
REPUBLIC OF SOUTH AFRICA

Caring, compassionate and responsive

Operations:

- 5:6 Is, 33 documents, arre
- -)k
- 21 -
- te)'s :sprts, 62 vehicles, no
- and ,Insected 283 docume



Caomhpanionate and respo

ALEXANDER BAY PCO

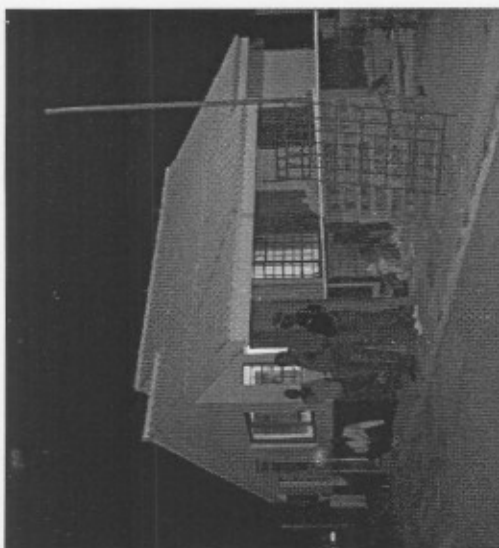
- Alexander bay Port Control office is located on the banks of the Orange river between Namibia and South Africa.
 - The port is situated in the middle of the diamond mines operating in Namibia (NAMDEB) and South Africa (Alexcor).
 - The border post operates as the third largest in the province and consists currently of five immigration officers. (Structure -- 1- Chief/Control Immigration officer, 5 – Immigration officers)
 - Operating hours are from 06:00 to 22:00 daily.
 - Travelers statistics 2006/07:
 - **South Africans;**
Arrivals: 33 341 Departures: 32 558 Total: 65 899
 - **Foreigners:**
Arrivals: 83 665 Departures: 77 460 Total: 161 125
- Total number of travelers: 227 024



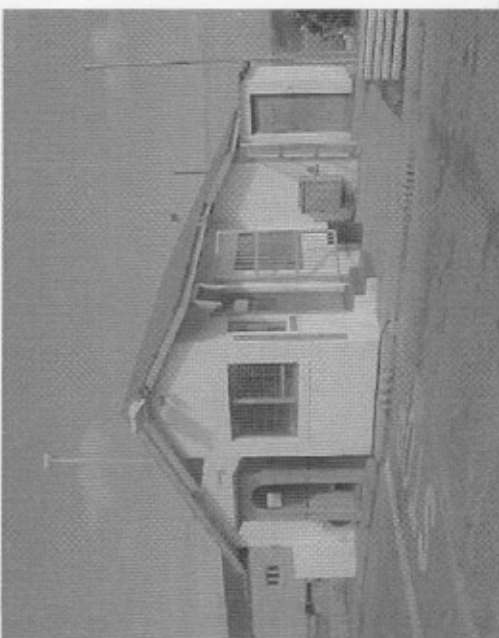
home affairs

Department
Home Affairs
REPUBLIC OF SOUTH AFRICA

Caring, compassionate and responsive



ALEXANDER BAY PCO



VIOOLSDRIFT PCO

- Vioolsdrift Port Control office is located on the banks of the Orange river between Namibia and South Africa.
 - The port is situated on the N7 and is a direct route from Cape town and Windhoek
 - The border post operates as the largest travelers clearing port in the province and consists currently of eleven immigration officers.
(Structure -- 1 – Chief/Control Immigration Officer, 4- Chief Immigration officers, 16 – Immigration officers, 1 Administration Clerk, 1 Cleaner)
 - Operating hours are 24 - hours daily.
 - Travelers statistics 2006/07:
 - **South Africans;**
Arrivals: 122 201 Departures: 120 035 Total: 242 236
 - **Foreigners:**
Arrivals: 140 882 Departures: 138 991 Total: 279 873
- Total number of travelers: 522 109



home affairs

Department:
Home Affairs
REPUBLIC OF SOUTH AFRICA

Caring, compassionate and responsive