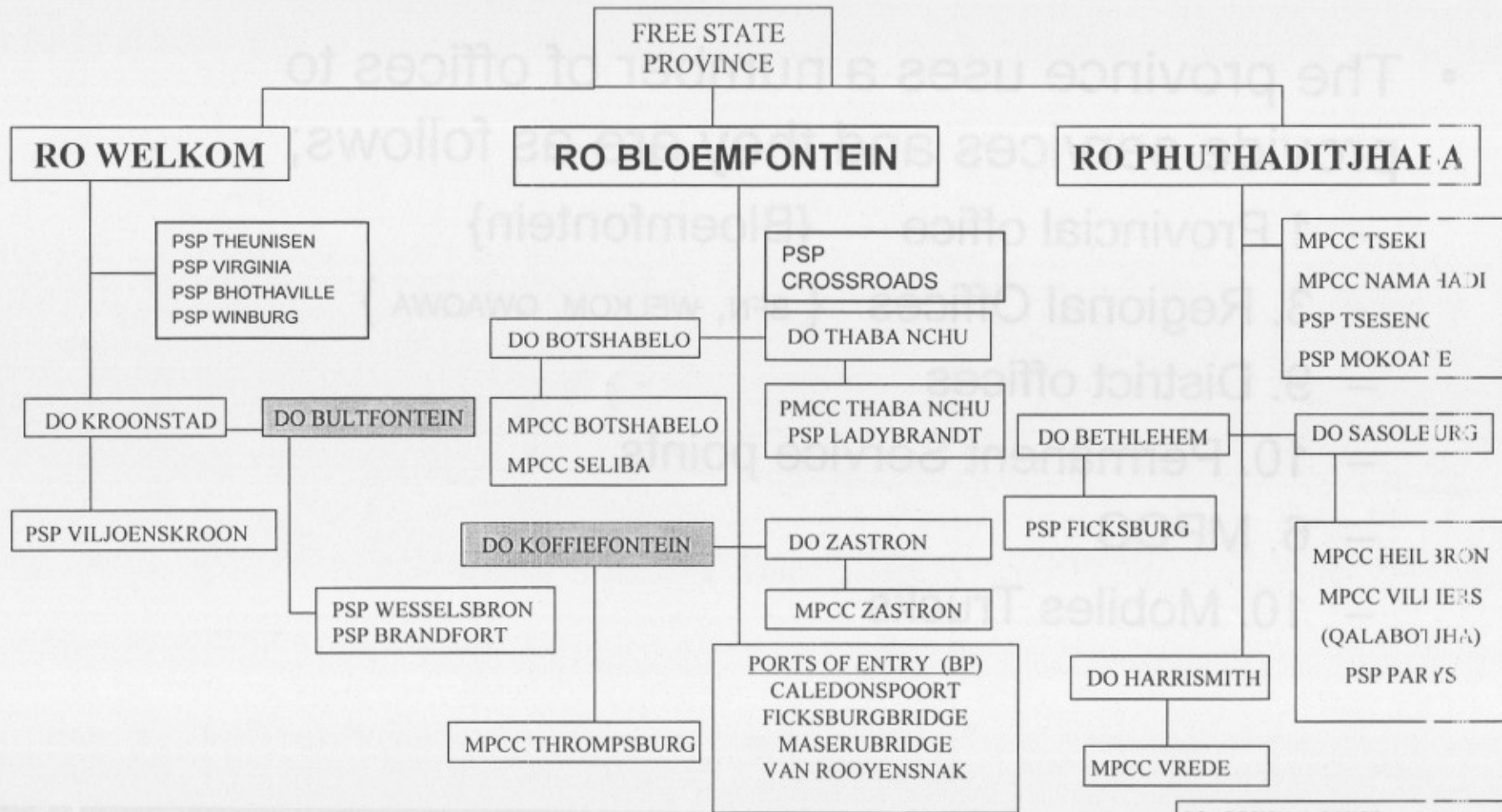


# Offices in the Province

- The province uses a number of offices to provide services and they are as follows;
  - 1. Provincial office {Bloemfontein}
  - 3. Regional Offices { BFN, WELKOM, QWAQWA }
  - 9. District offices
  - 10. Permanent Service points
  - 6. MPCC
  - 10. Mobiles Trucks

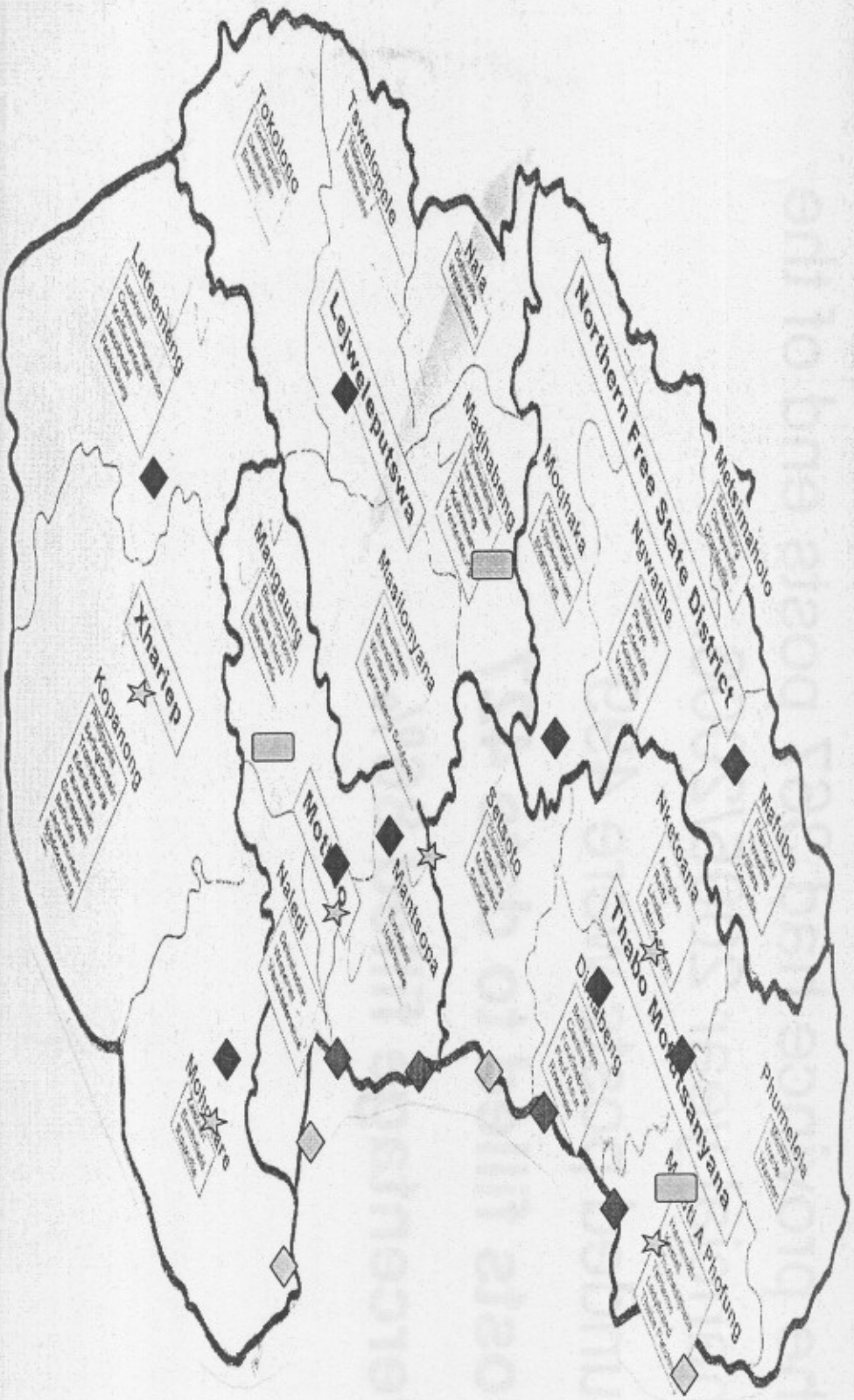


# FREE STATE ORGANISATIONAL STRUCTURE



RO – REGIONAL OFFICE  
 DO – DISTRICT OFFICE  
 PSP – PERMANENT SERVICE POINT  
 BP – BORDER POST  
 MPCC – MULTI PURPOSE COMMUNITY CENTRE

# Geographic Representation - FS



## Staffing

- The province had 367 posts end of the financial year 2005/2006.
- Funded posts were 499
- **Posts filled to date 427**
- **Percentage filled 86%**



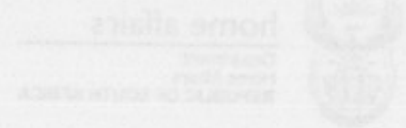
# Staffing

| Provincial Structure |                     |  |              |              |             |
|----------------------|---------------------|--|--------------|--------------|-------------|
|                      | Approved posts 2006 |  | Filled posts | Vacant posts | Funded 2007 |
| Provincial Office    | 31                  |  | 16           | 11           | 31          |
| Bloemfontein R/O     | 70                  |  | 72           | -2           | 77          |
| Welkom R/O           | 65                  |  | 54           | 11           | 70          |
| Botshabelo D/O       | 39                  |  | 35           | 4            | 44          |
| Bethlehem D/O        | 35                  |  | 35           | 1            | 41          |
| Phuthaditjhaba D/O   | 57                  |  | 48           | 9            | 57          |
| Kroonstad D/O        | 34                  |  | 31           | 3            | 34          |
| van Rooyenshek       | 25                  |  | 21           | 4            | 31          |
| Caledonspoor         | 30                  |  | 23           | 7            | 31          |
| Ficksburg Bridge     | 48                  |  | 41           | 7            | 66          |
| Maseru Bridge        | 65                  |  | 51           | 14           | 75          |
| <b>Total</b>         | <b>499</b>          |  | <b>427</b>   | <b>71</b>    | <b>525</b>  |

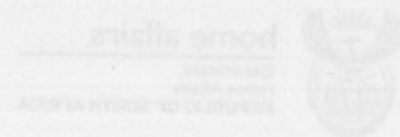
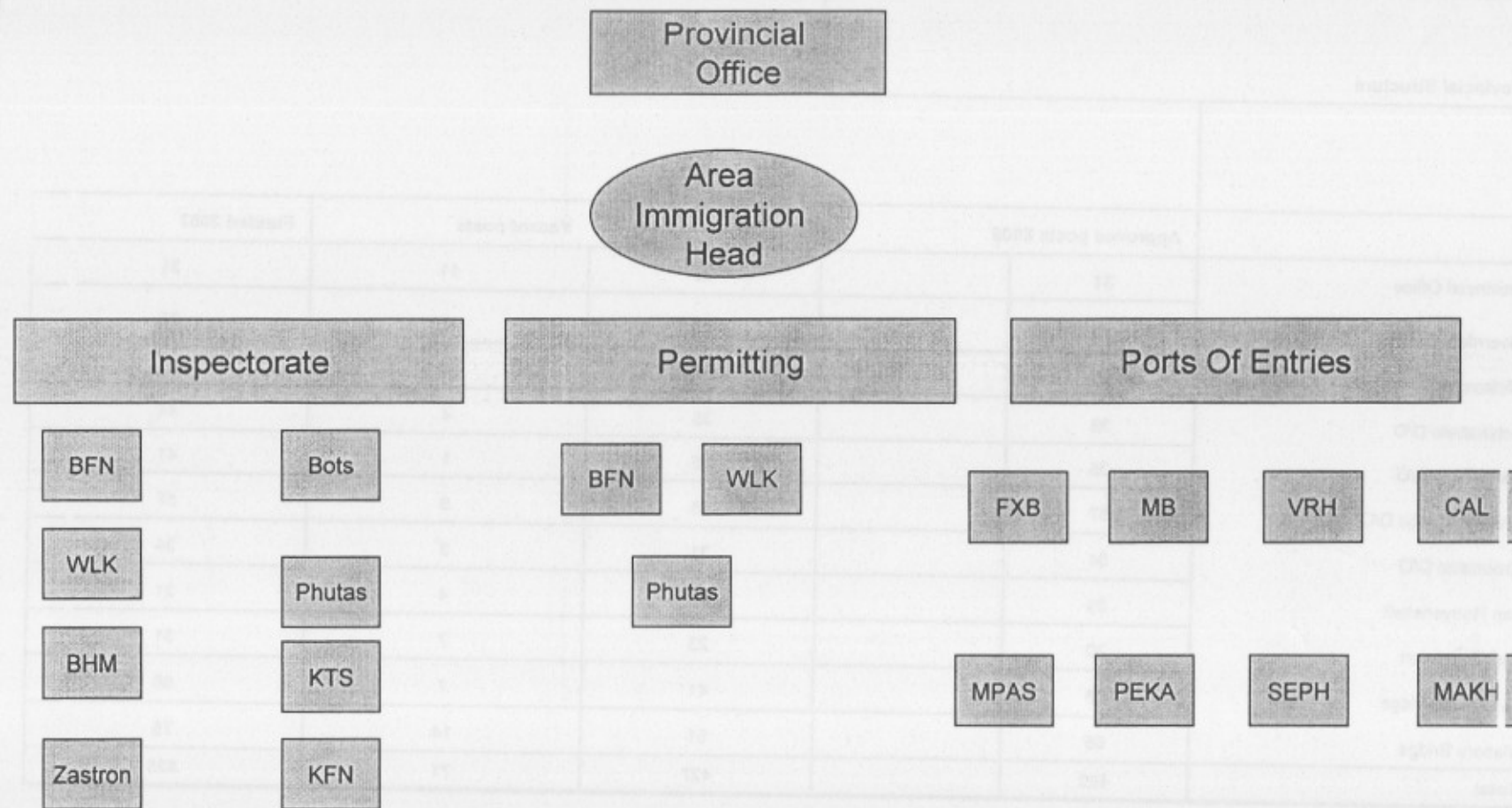


home affairs

Department:  
Home Affairs  
REPUBLIC OF SOUTH AFRICA



# Immigration Status Structure



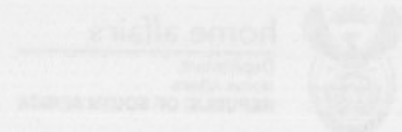
# Immigration

## 1. In-land Immigration Inspectorate

In the following towns immigration officers are visible

|                |                              |                  |
|----------------|------------------------------|------------------|
| Bloemfontein   | (Xhariep, Motheo)            | {11- Officials}  |
| Welkom         | (Lejweleputswa, Fezile Dabi) | {10- Officials}  |
| Kroonstad      | (Lejweleputswa, Fezile Dabi) | {4- Officials}   |
| Bethlehem      | (Thabo Mofutsanyana)         | { 4 - Officials} |
| Phuthaditjhaba | (Thabo Mofutsanyana)         | { 6 -Officials}  |
| Botshabelo     | ( Xhariep, Motheo)           | { 4 - Officials} |

Total Officials = 39



# Challenges and possible solutions

## Ports of Entries

### Challenges

- Staff shortages
- Corruption
- Systems and procedures
- Level of Leadership

### Possible Solutions

- Need to fill all vacancies in 1 financial year
- CCTV to be implemented in all border posts and must be monitored by independent people like NIA. We need to revisit the processes.
- Upgrade MCS, link all ports of entries to each other and provide ports with hand held scanners.
- Upgrade both offices and provide more officials accommodation.
- To appoint ASD at all border posts who will be the officers in charge and leaders.





## NIB Structure

### 2. Port of entries in The province

- Maseru bridge 34
- Ficksburg 26
- Caledonspoort 10
- Van Rooyenshek 9
  - Monontshapass
  - Peka bridge 1
  - Makhaleenshek 1
  - Sephaphoshek 1

Presently manned  
By DHA

DHA Official Deployed  
Daily

- **Total Staff = 82**



home affairs

Department:  
Home Affairs  
REPUBLIC OF SOUTH AFRICA

# NIB Structure

## 3. Permitting

- Regional Office Bloemfontein 4
- Regional office Welkom. 3
- Regional Office Phuthaditjhaba 3
  
- Present staff = 10



# Status of Current operations

## ❑ Service Delivery

### Ports Of Entries

- Immigration officers exercise control over people who enters and leave the RSA.
- Immigration officers issues cross-border permits and contract work permits.
- Periodically immigration officers are used to man roadblocks with other stakeholders.
- We are using a number security guards to assist with opening the boom gates and check endorsement.
- 4 Ports Of Entries still need to employ its own staff.



# Status of Current operations

## MASERU BRIDGE

- The office building was revamped recently to make provision for stakeholders at the border post to share building.
- Border post upgraded with new office accommodation to ensure smooth operations within the port parameter.
- Operating > 24/7
- Average Entry per day 7650 and Average departure 8350
- Staff per shift = 7 people

