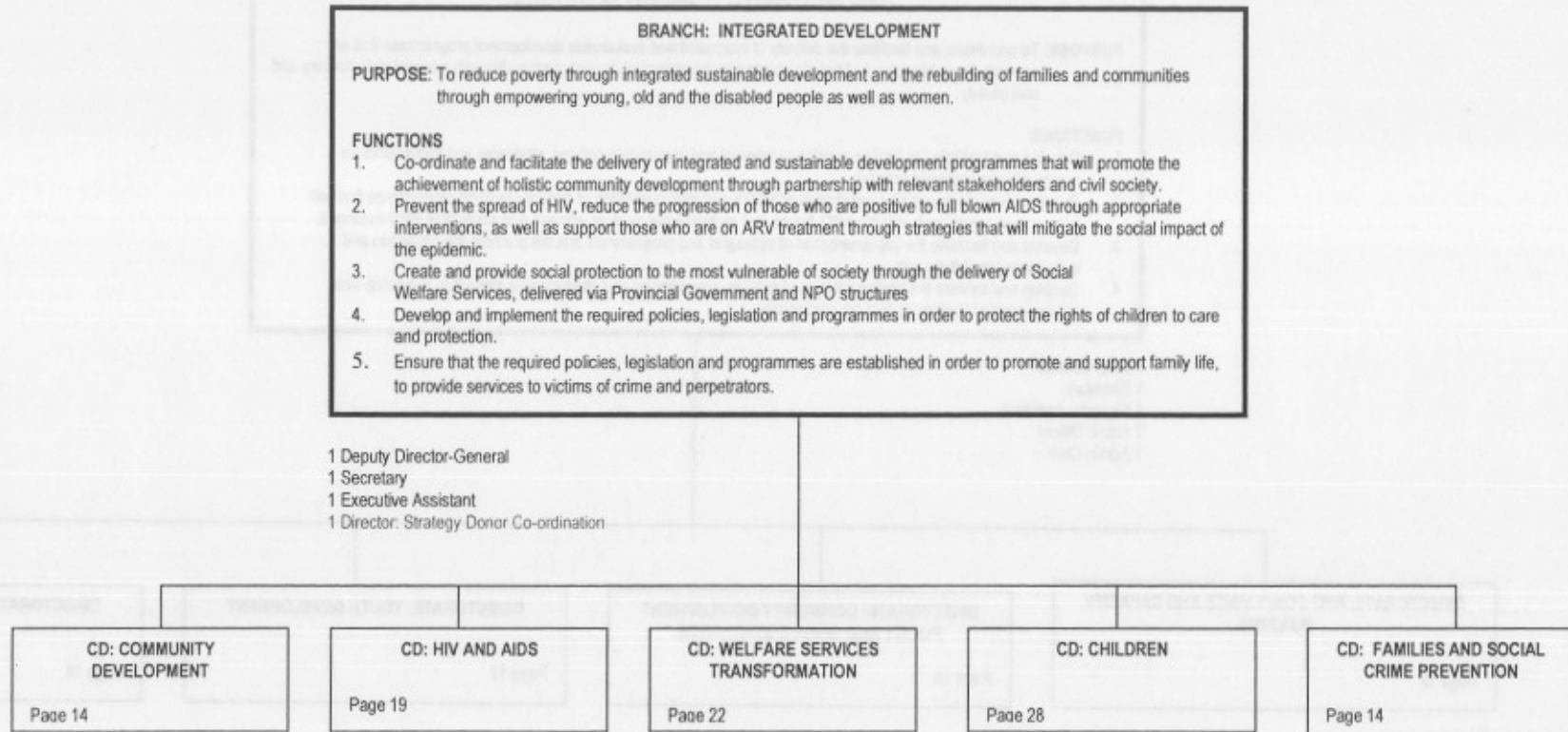
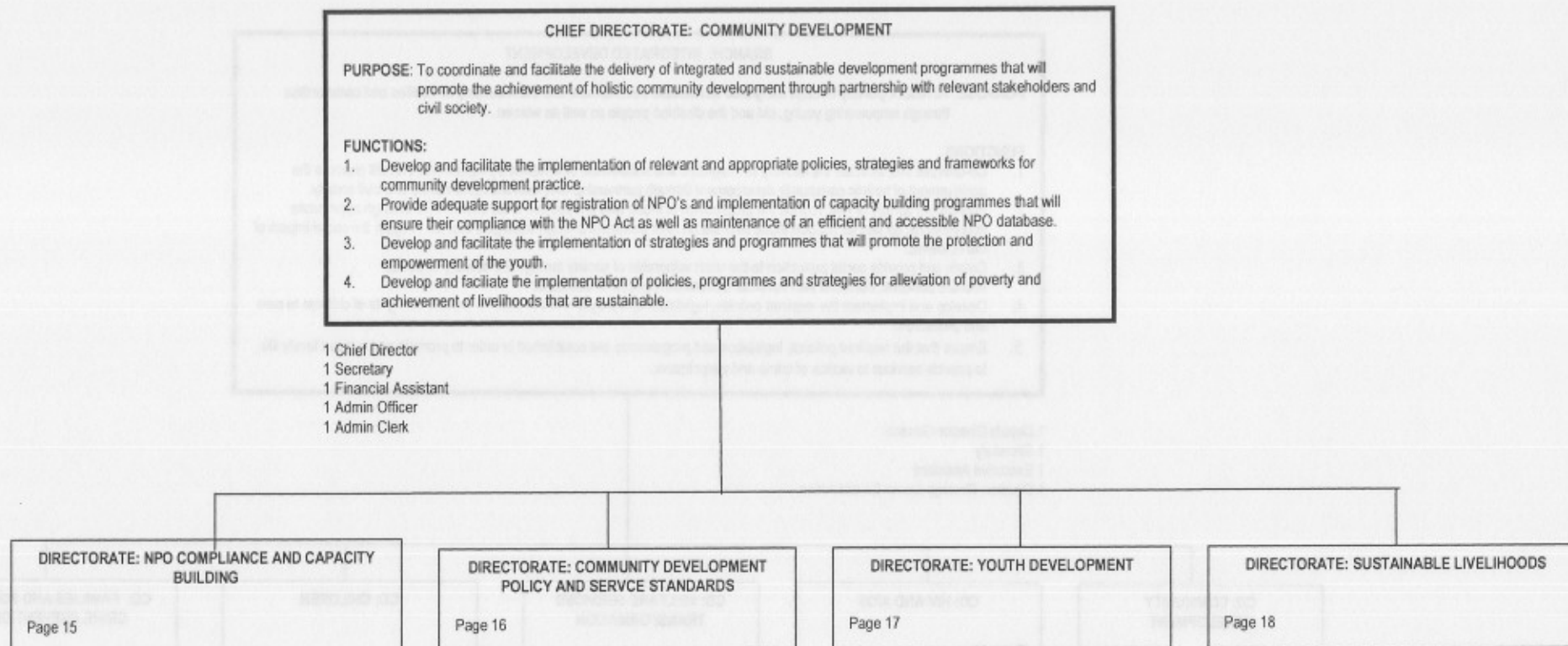


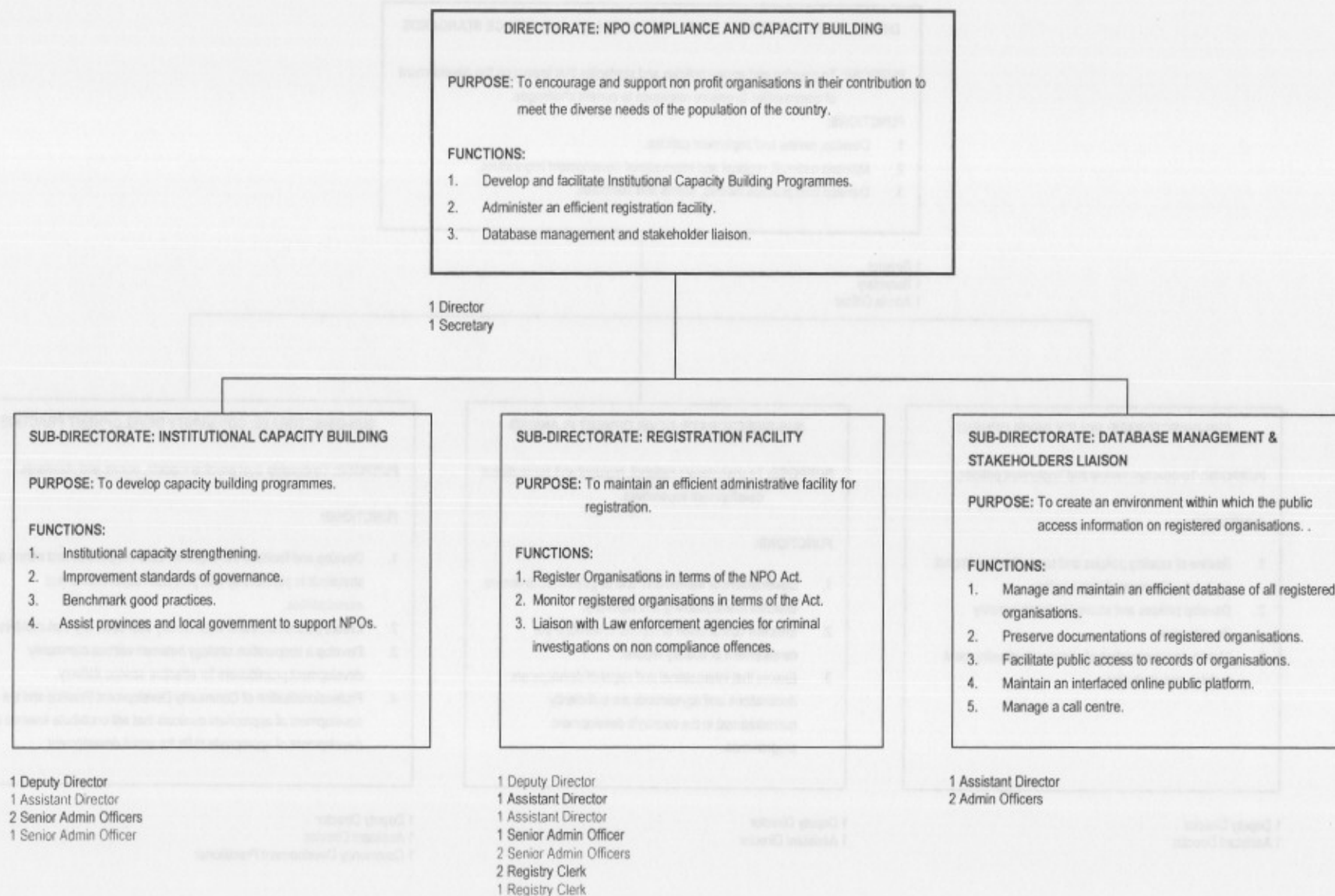
PROPOSED ORGANISATIONAL STRUCTURE AND POST ESTABLISHMENT FOR THE DEPARTMENT OF SOCIAL DEVELOPMENT



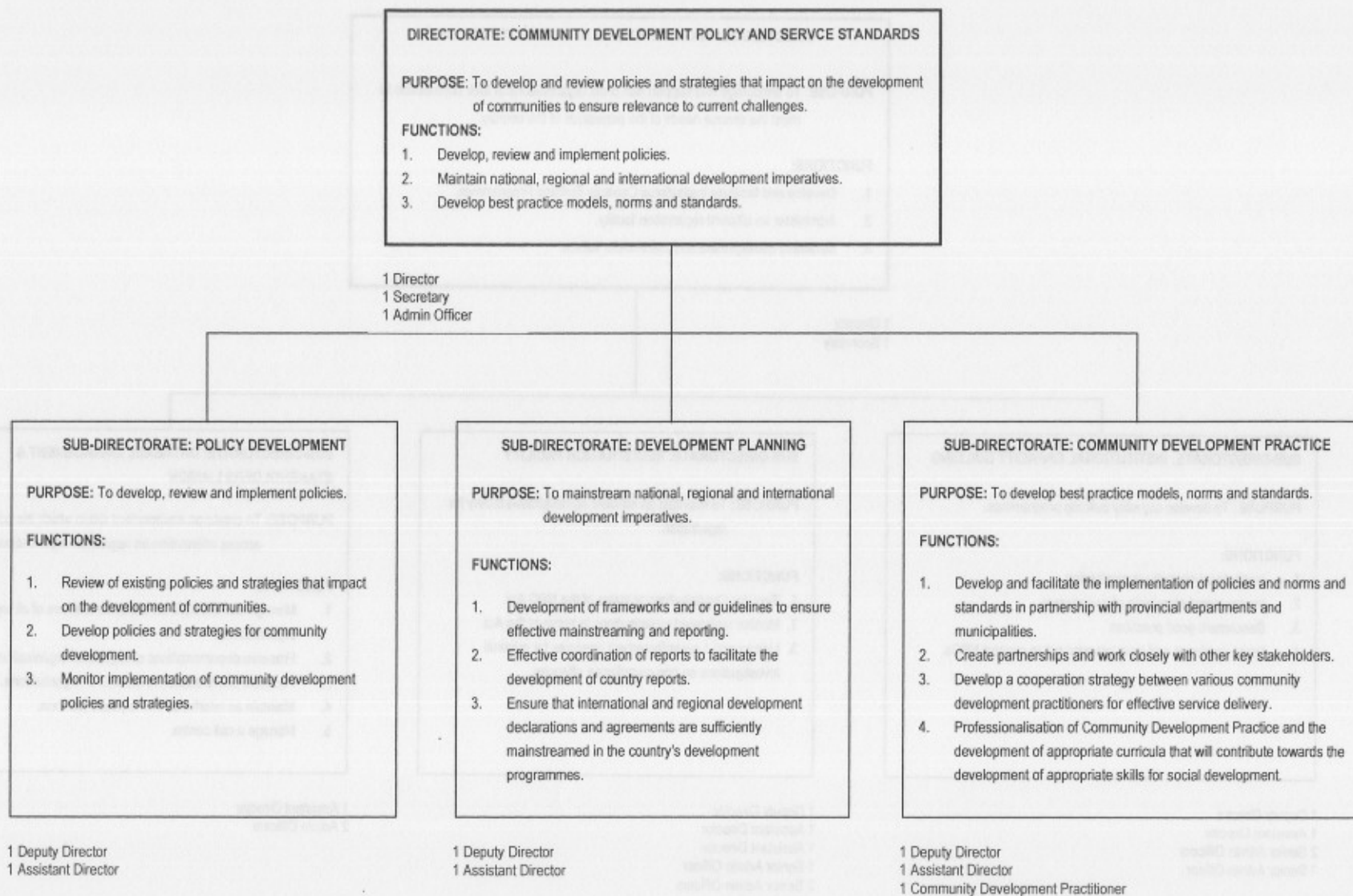
TASMSO PROPOSED ORGANISATIONAL STRUCTURE AND POST ESTABLISHMENT FOR THE DEPARTMENT OF SOCIAL DEVELOPMENT



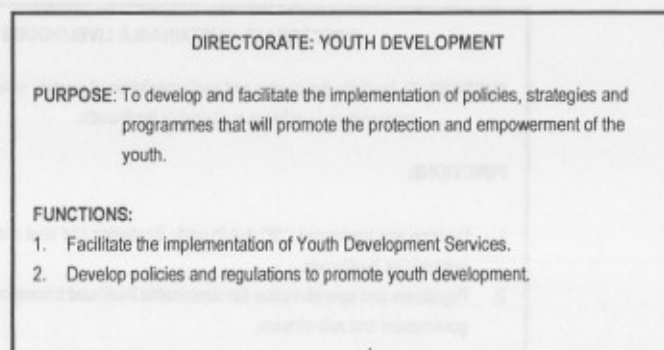
PROPOSED ORGANISATIONAL STRUCTURE AND POST ESTABLISHMENT FOR THE DEPARTMENT OF SOCIAL DEVELOPMENT



PROPOSED ORGANISATIONAL STRUCTURE AND POST ESTABLISHMENT FOR THE DEPARTMENT OF SOCIAL DEVELOPMENT



PROPOSED ORGANISATIONAL STRUCTURE AND POST ESTABLISHMENT FOR THE DEPARTMENT OF SOCIAL DEVELOPMENT



1 Director
1 Secretary

SUB-DIRECTORATE: PROGRAMME MANAGEMENT AND IMPLEMENTATION

PURPOSE: To facilitate the implementation of Youth Development Services.

FUNCTIONS:

1. Develop implementation guidelines.
2. Develop capacity Building Programme for Provinces.
3. Develop Service Delivery Standards.
4. Develop assessment tools & impact assessment.
5. Social Cluster Co-ordination.

1 Deputy Director

SUB-DIRECTORATE: POLICY DEVELOPMENT

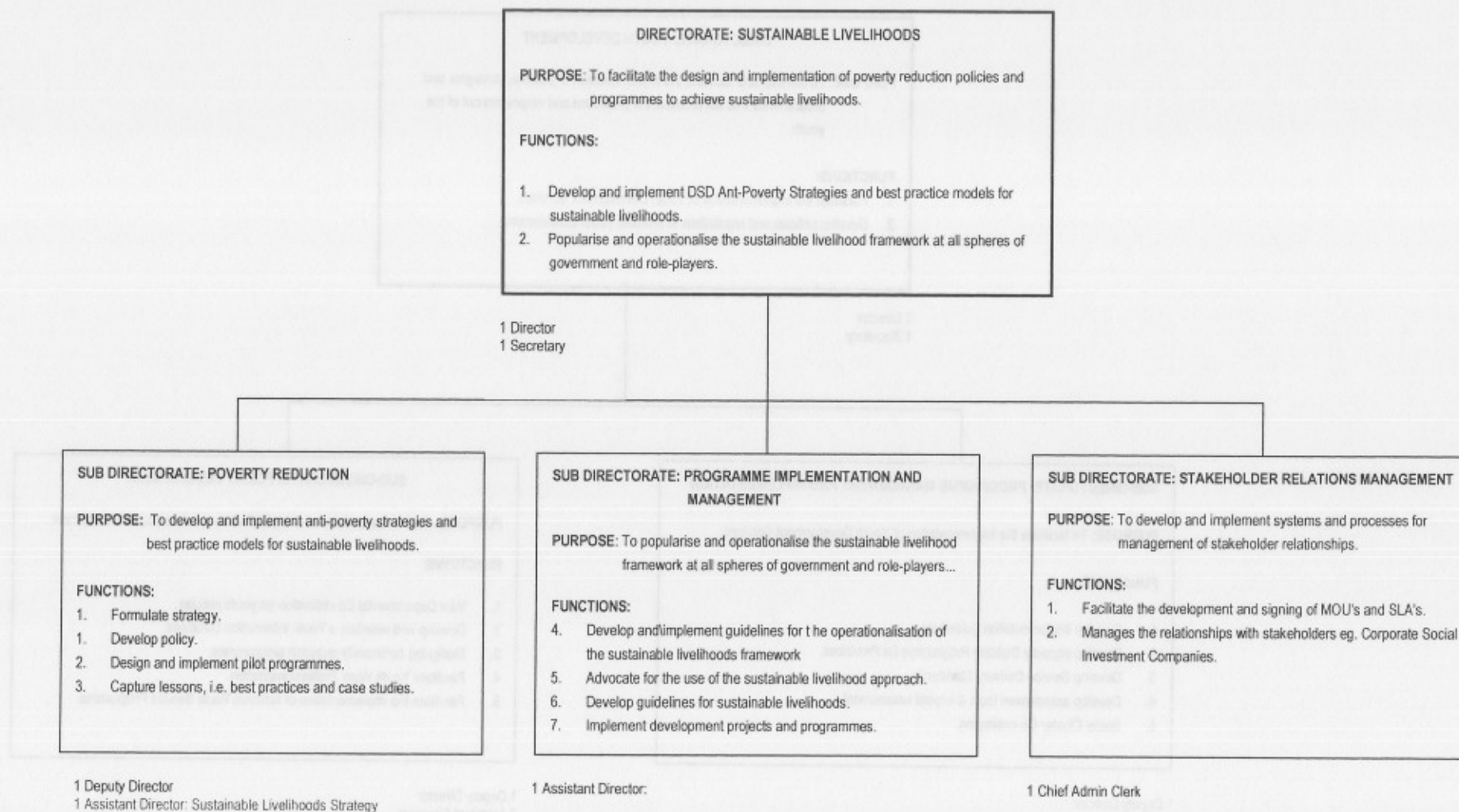
PURPOSE: To develop policies and regulations to promote youth development.

FUNCTIONS:

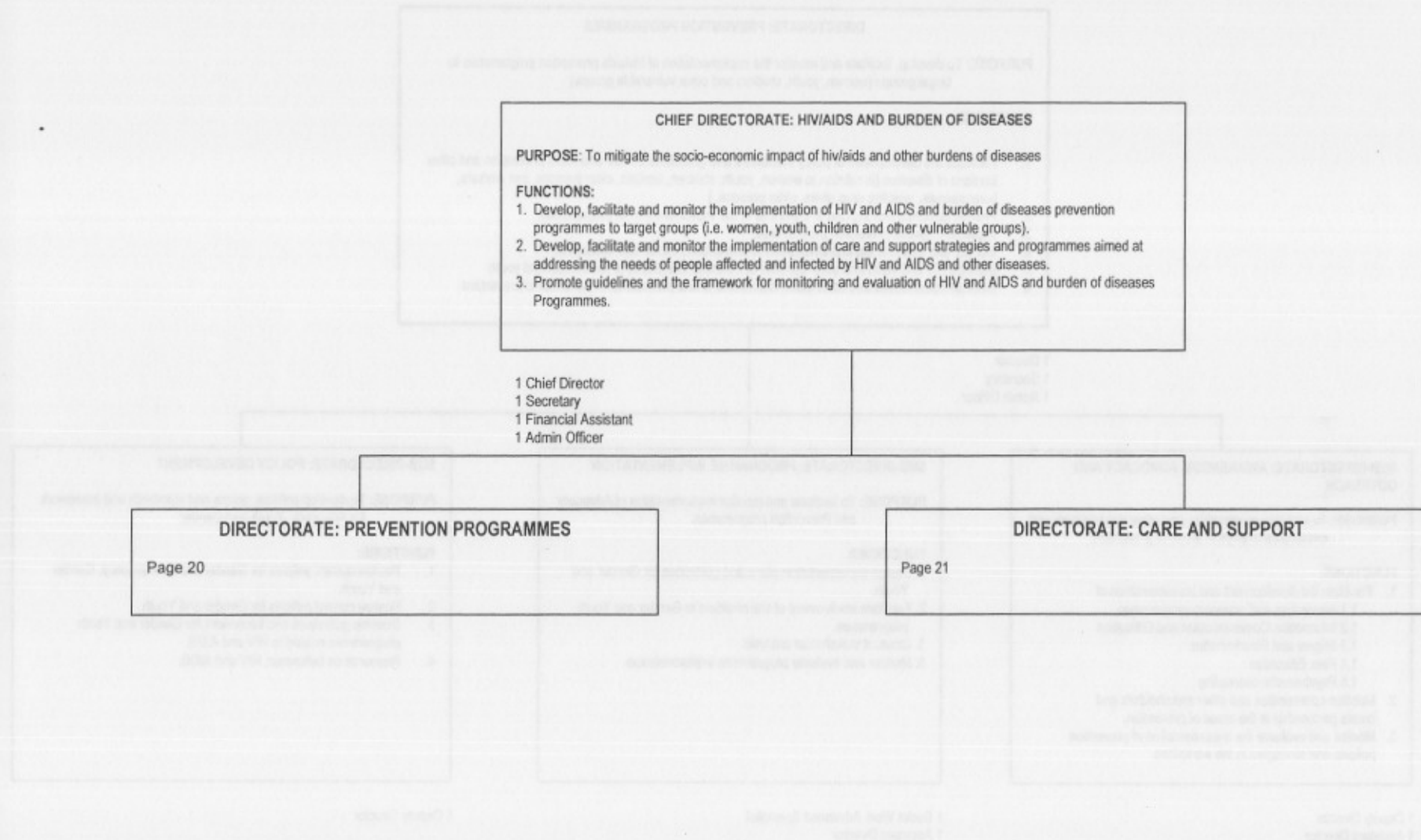
1. Inter Departmental Co-ordination on youth policies.
2. Develop and maintain a Youth Information Database.
3. Designing community outreach programmes.
4. Facilitate Youth Work Professionalisation.
5. Facilitate the implementation of National Youth Service Programme.

1 Deputy Director
2 Assistant Directors

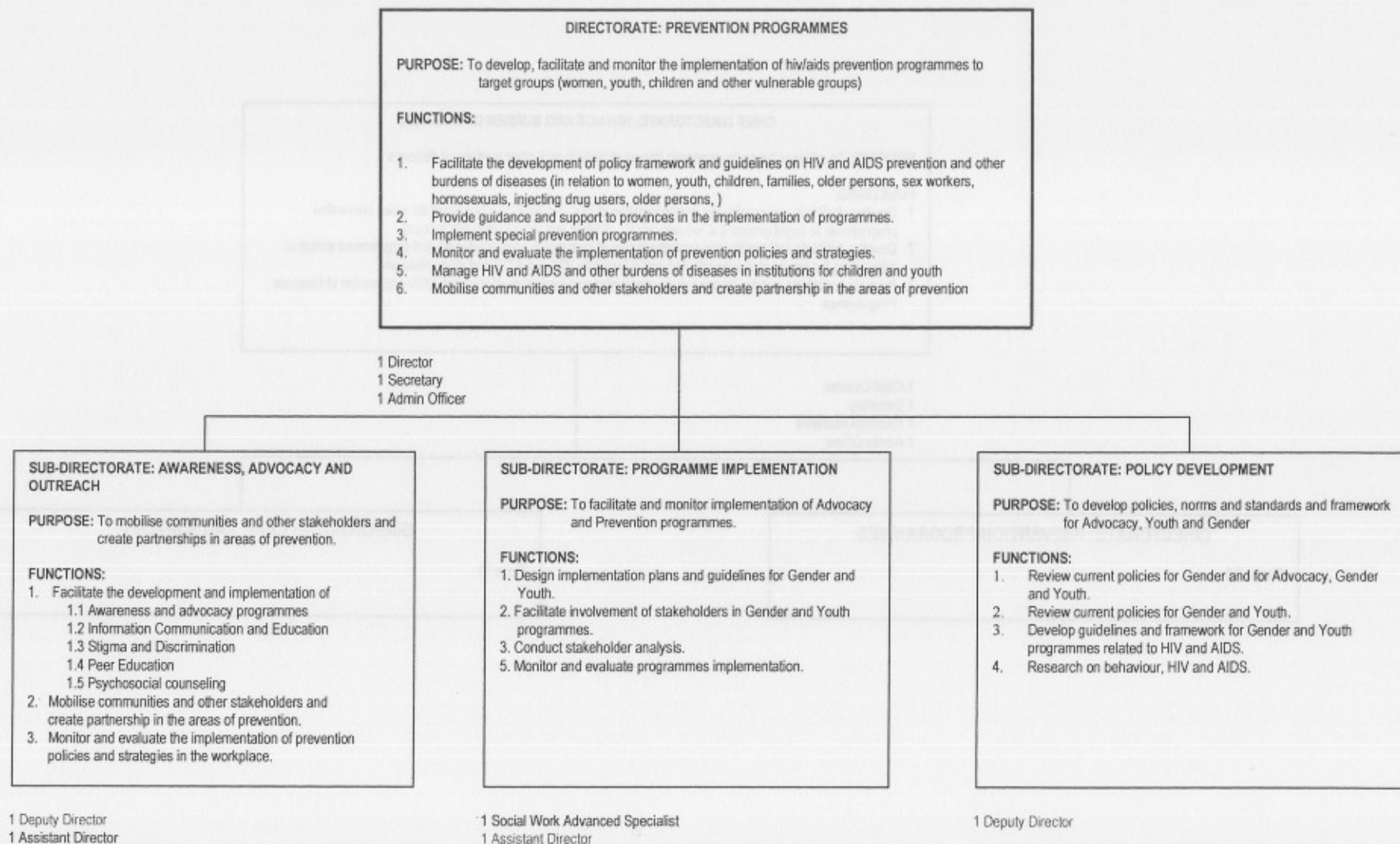
PROPOSED ORGANISATIONAL STRUCTURE AND POST ESTABLISHMENT FOR THE DEPARTMENT OF SOCIAL DEVELOPMENT



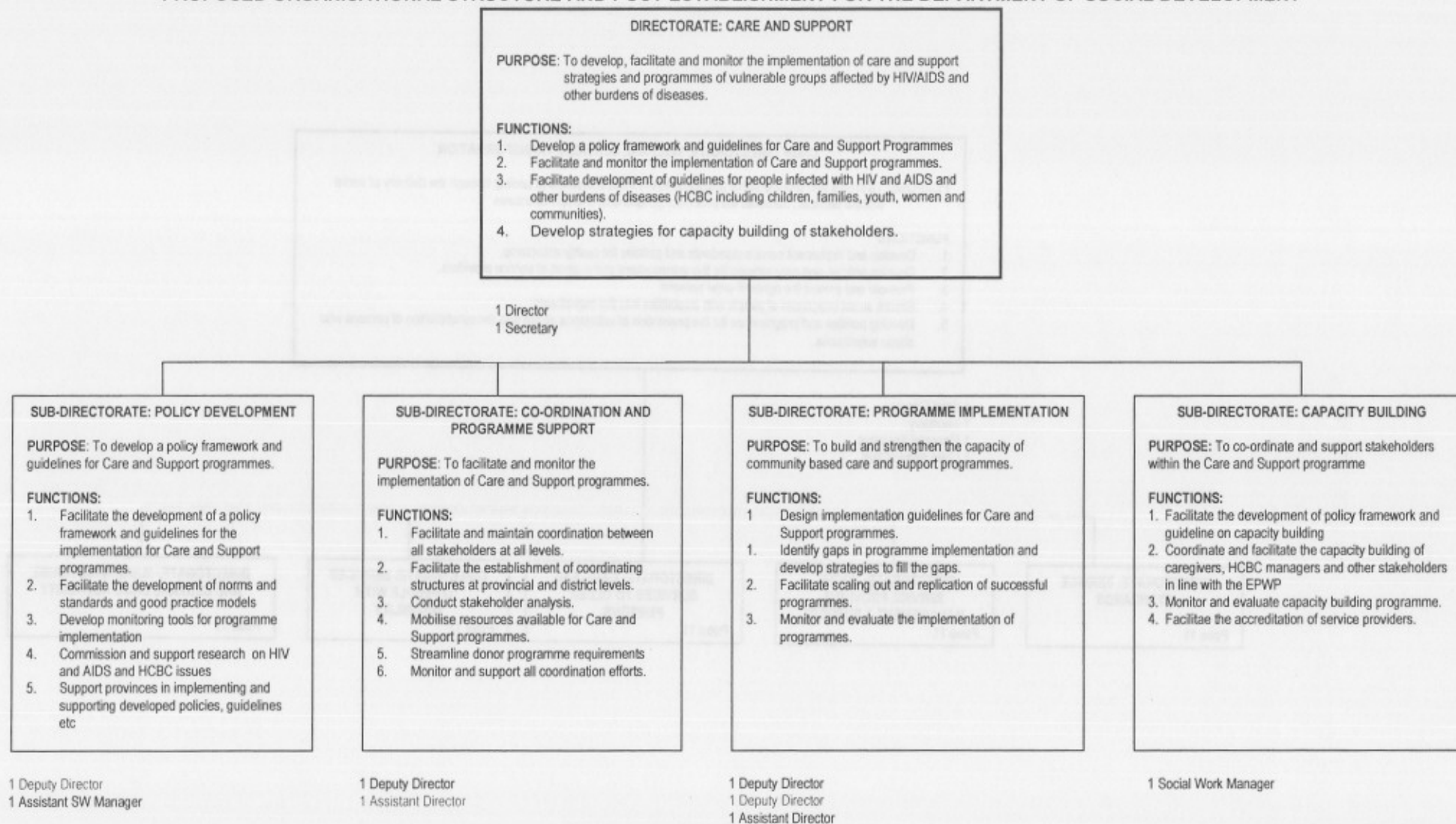
PROPOSED ORGANISATIONAL STRUCTURE AND POST ESTABLISHMENT FOR THE DEPARTMENT OF SOCIAL DEVELOPMENT



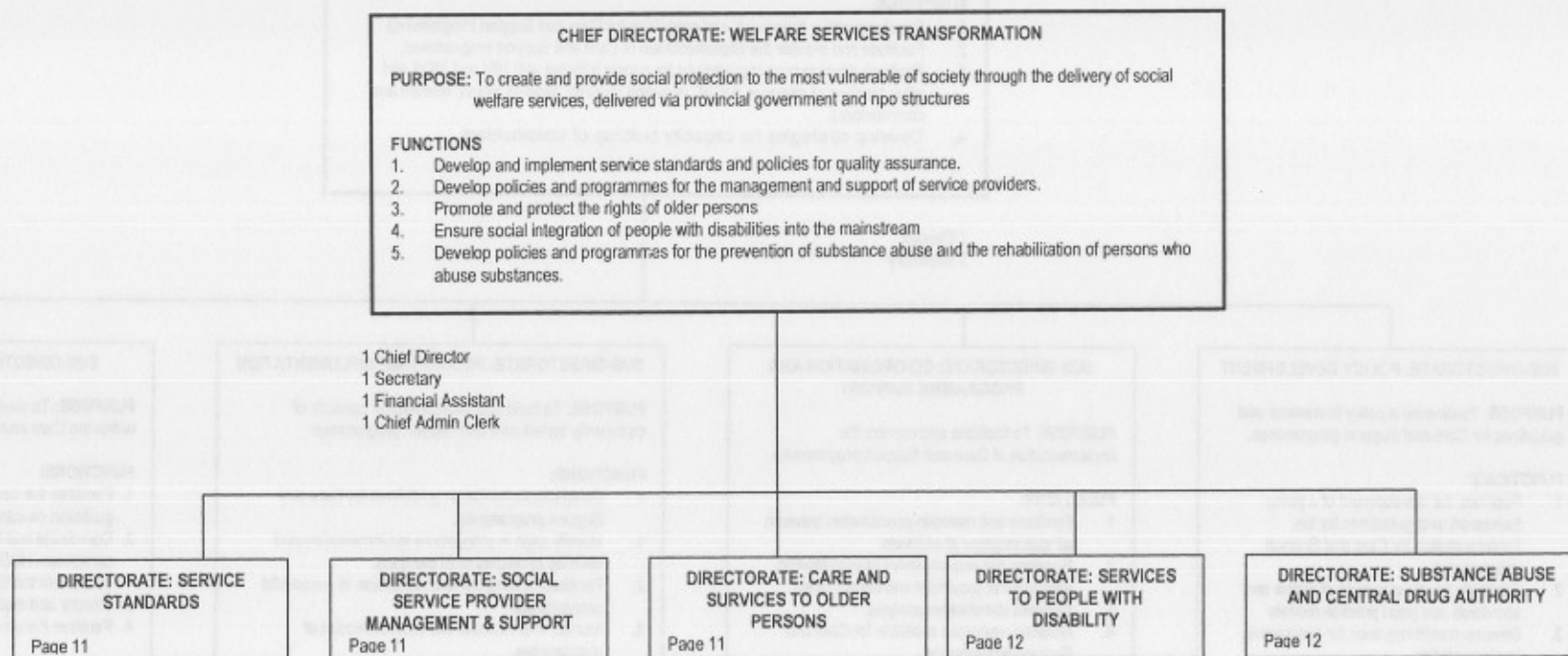
PROPOSED ORGANISATIONAL STRUCTURE AND POST ESTABLISHMENT FOR THE DEPARTMENT OF SOCIAL DEVELOPMENT



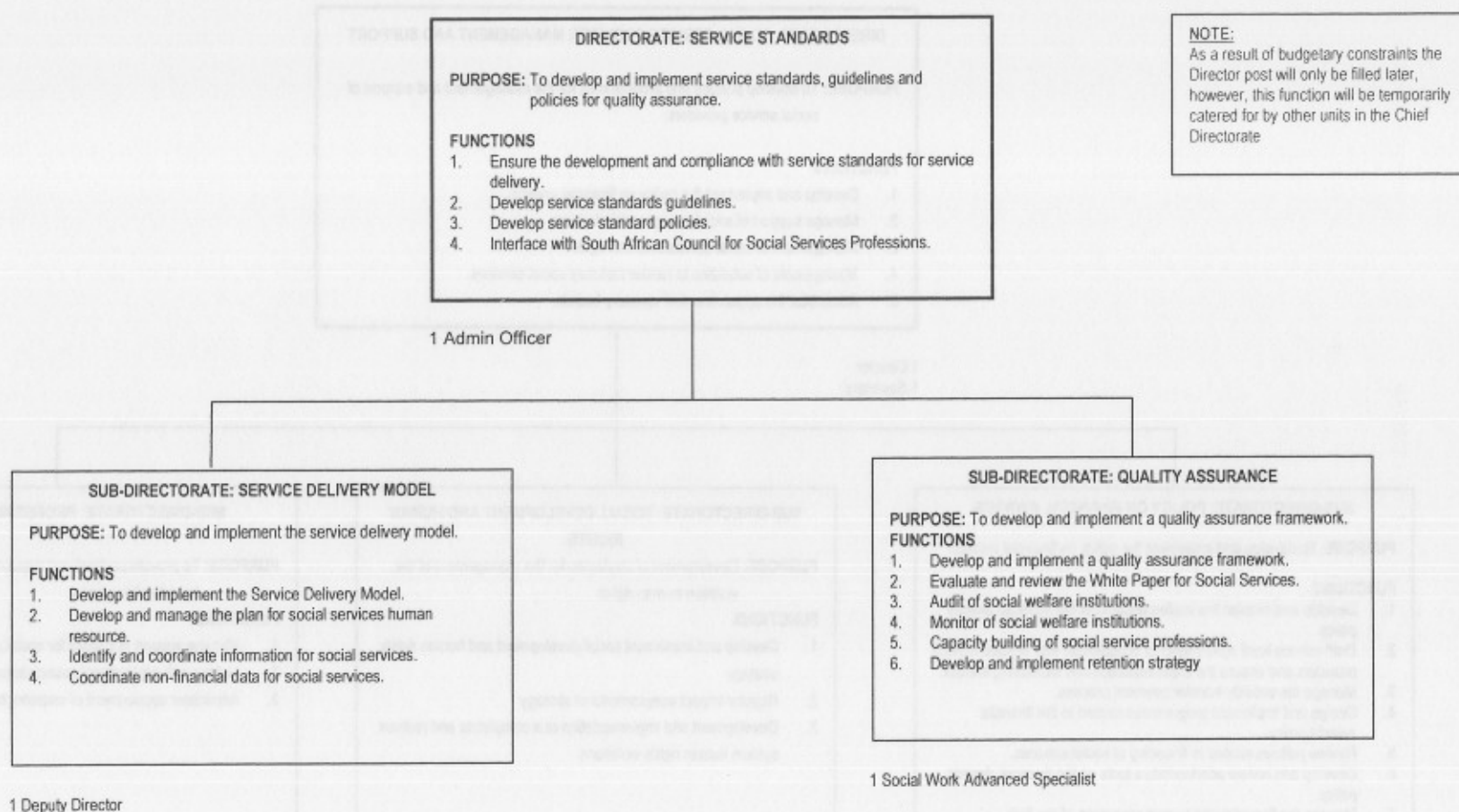
PROPOSED ORGANISATIONAL STRUCTURE AND POST ESTABLISHMENT FOR THE DEPARTMENT OF SOCIAL DEVELOPMENT



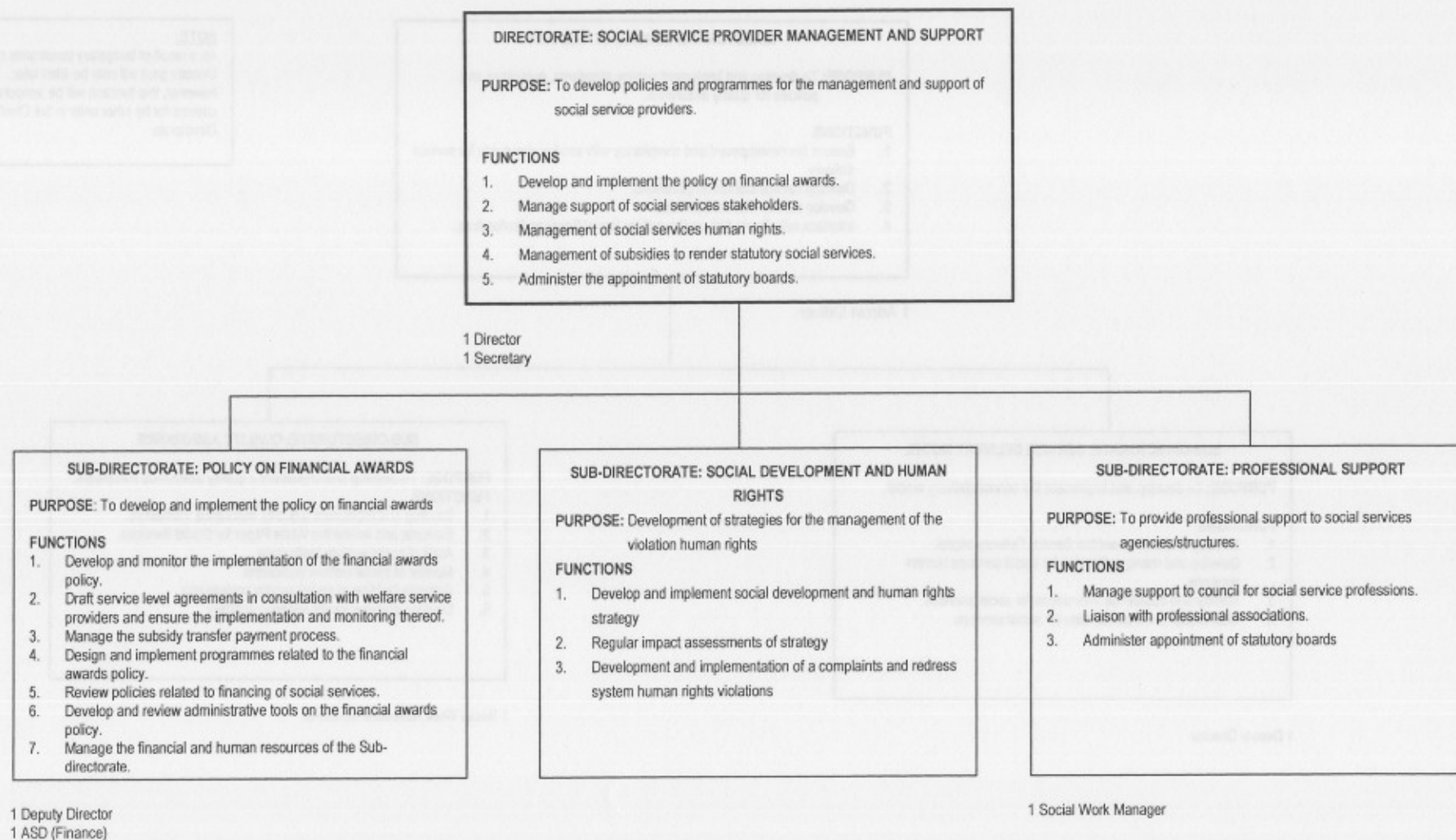
PROPOSED ORGANISATIONAL STRUCTURE AND POST ESTABLISHMENT FOR THE DEPARTMENT OF SOCIAL DEVELOPMENT



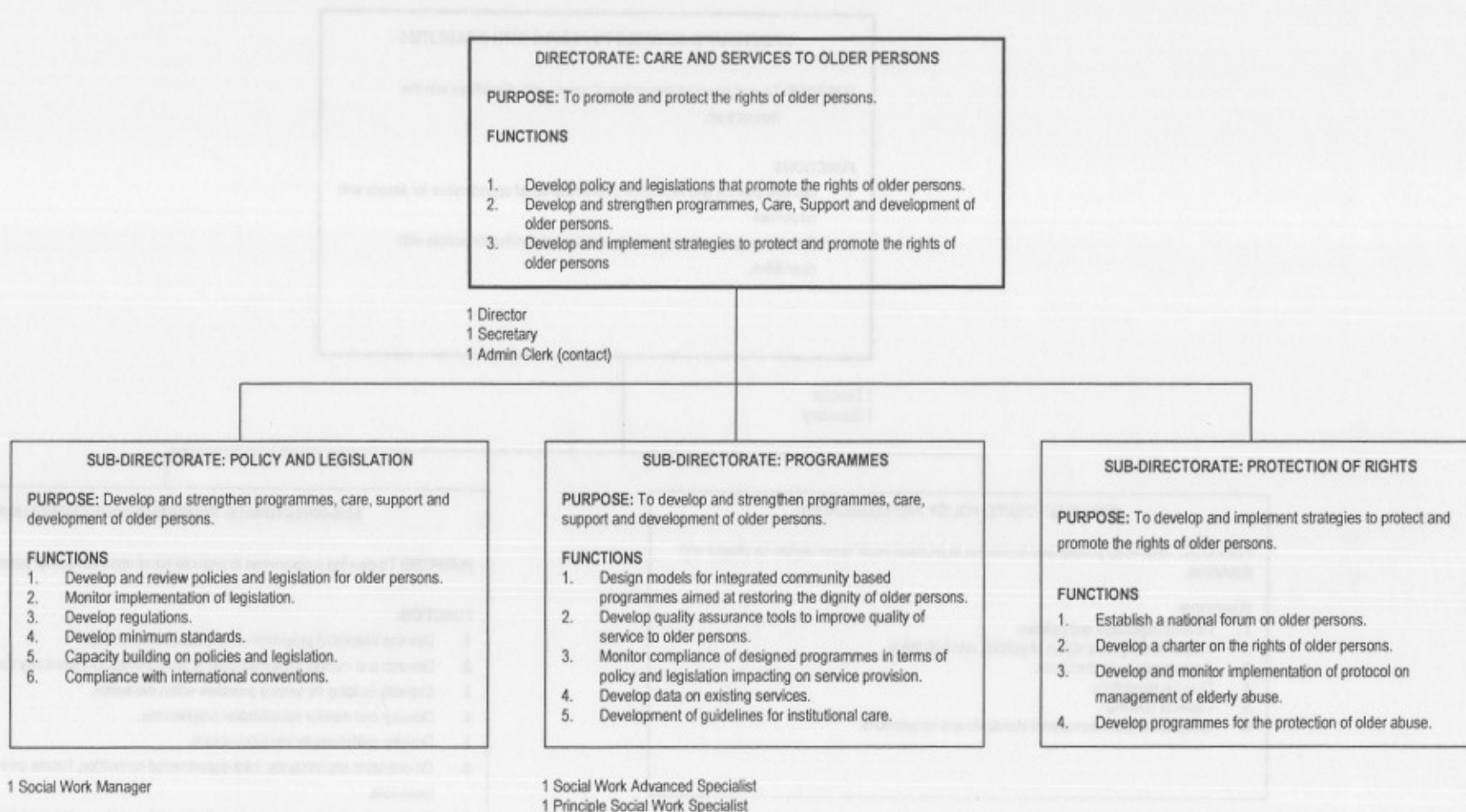
PROPOSED ORGANISATIONAL STRUCTURE AND POST ESTABLISHMENT FOR THE DEPARTMENT OF SOCIAL DEVELOPMENT



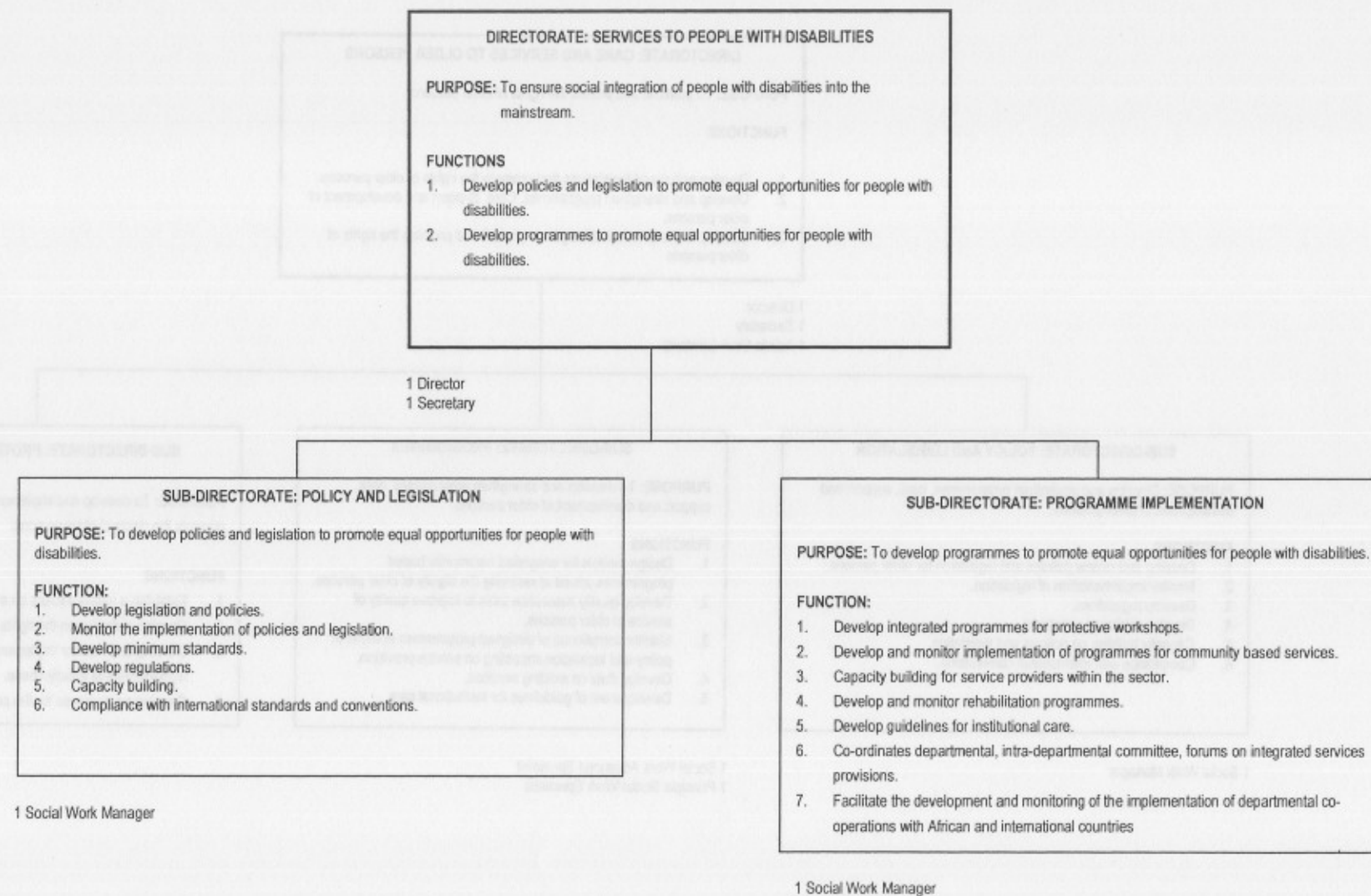
PROPOSED ORGANISATIONAL STRUCTURE AND POST ESTABLISHMENT FOR THE DEPARTMENT OF SOCIAL DEVELOPMENT



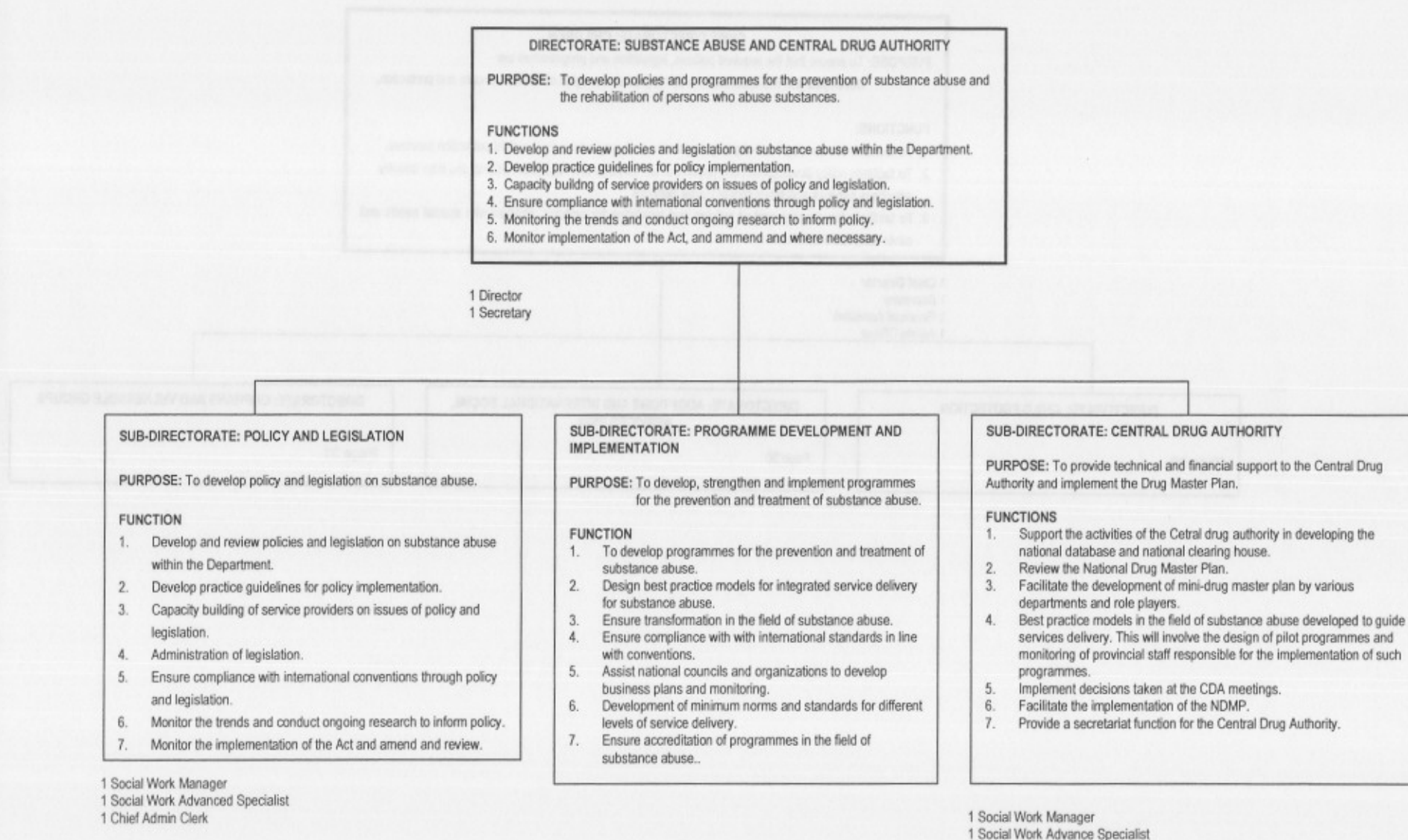
PROPOSED ORGANISATIONAL STRUCTURE AND POST ESTABLISHMENT FOR THE DEPARTMENT OF SOCIAL DEVELOPMENT



PROPOSED ORGANISATIONAL STRUCTURE AND POST ESTABLISHMENT FOR THE DEPARTMENT OF SOCIAL DEVELOPMENT



PROPOSED ORGANISATIONAL STRUCTURE AND POST ESTABLISHMENT FOR THE DEPARTMENT OF SOCIAL DEVELOPMENT



PROPOSED ORGANISATIONAL STRUCTURE AND POST ESTABLISHMENT FOR THE DEPARTMENT OF SOCIAL DEVELOPMENT

