

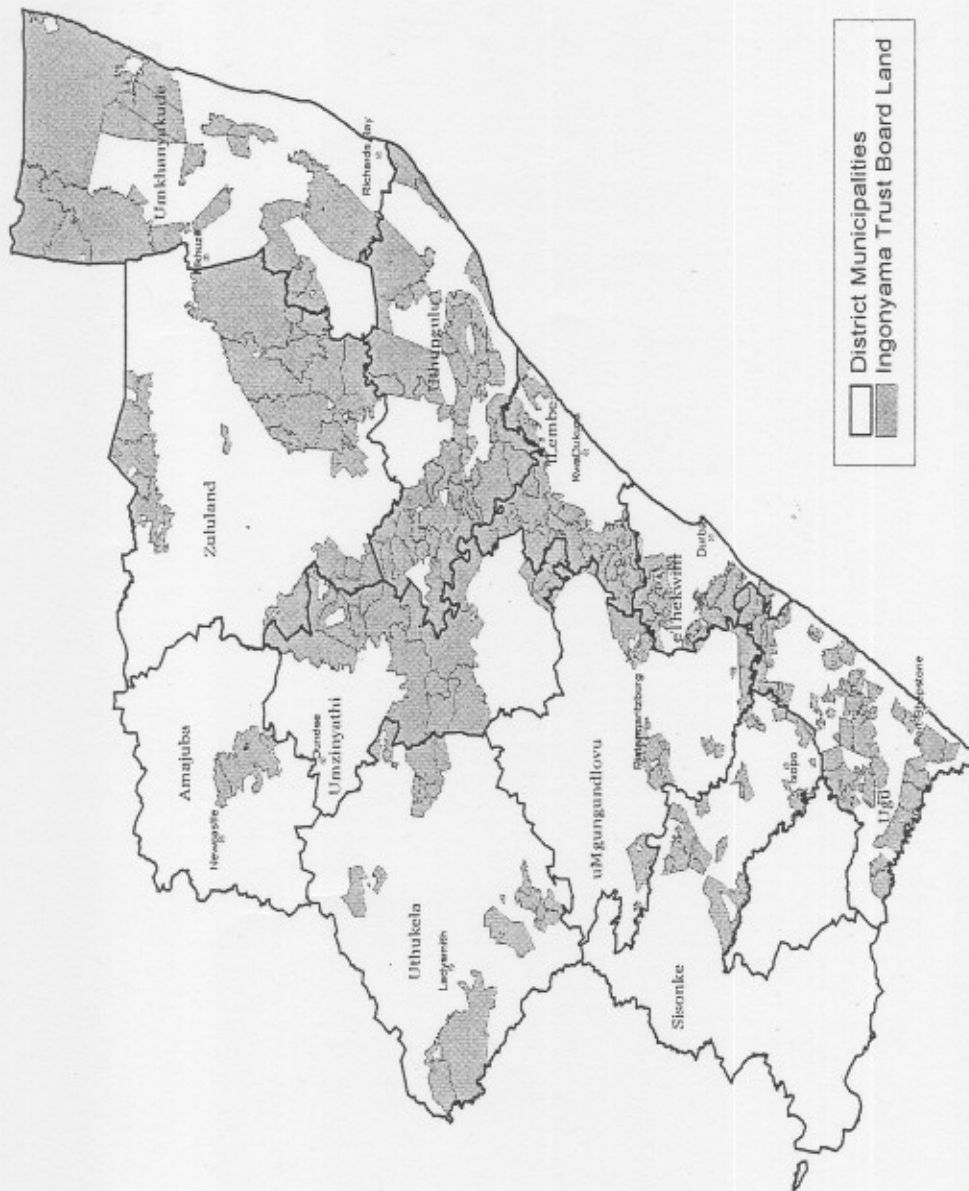
3

**PRESENTATION ON ANNUAL REPORT FOR YEAR ENDING 31 MARCH
2006 TO PORTFOLIO COMMITTEE ON TUESDAY
17 OCTOBER 2006
BY
THE INGONYAMA TRUST BOARD
REPRESENTED BY:**

**JEROME NGWENYA (Acting Chairperson)
Ms JABU BHENGU (Board Member)
ROBIN RAUBENHEIMER (Board Member)
CHRIS AITKEN (Secretariat: responsible for Real Estate)
AMIN MIA (Secretariat: responsible for financial matters)**



06/10/17 pc agric



BACKGROUND INFORMATION

- **LEGISLATION**
- **LAND OWNERSHIP**
- **POPULATION**
- **TRADITIONAL AUTHORITIES**

FINANCIAL POSITION AS AT 31 MARCH 2006

INGONYAMA TRUST BOARD - OWN FUND – (INCOME FROM INVESTMENTS AND TRADING ACTIVITIES)

• RENTAL INCOME	R 1 444 058	INCREASE OF	60.18%
• ROYALTY INCOME	R 7 009 681	INCREASE OF	0.50%
• INVESTMENT INCOME	R 5 523 324	INCREASE OF	23.02%

INGONYAMA TRUST BOARD - OWN FUND EXPENSES

• DISBURSEMENT TO TRADITIONAL AUTHORITIES		INCREASE OF	75.80%
• ADMINISTRATION EXPENSES		DECREASE OF	83.35%

INGONYAMA TRUST BOARD – GRANT-IN-AID RECEIVED FROM THE DEPARTMENT OF LAND AFFAIRS/APROPRIATED FUNDS

• TRANSFER PAYMENT RECEIVED	R 1 837 000	INCREASE OF	716.44%
• TOTAL EXPENDITURE	R 1 487 712	INCREASE OF	326.64%

**AUDITOR - GENERALS REPORT
QUALIFICATIONS:**

- Land Holdings
- Completeness of Income

AUDITOR-GENERAL REPORT(CONTINUED)

EMPHASIS OF MATTER:

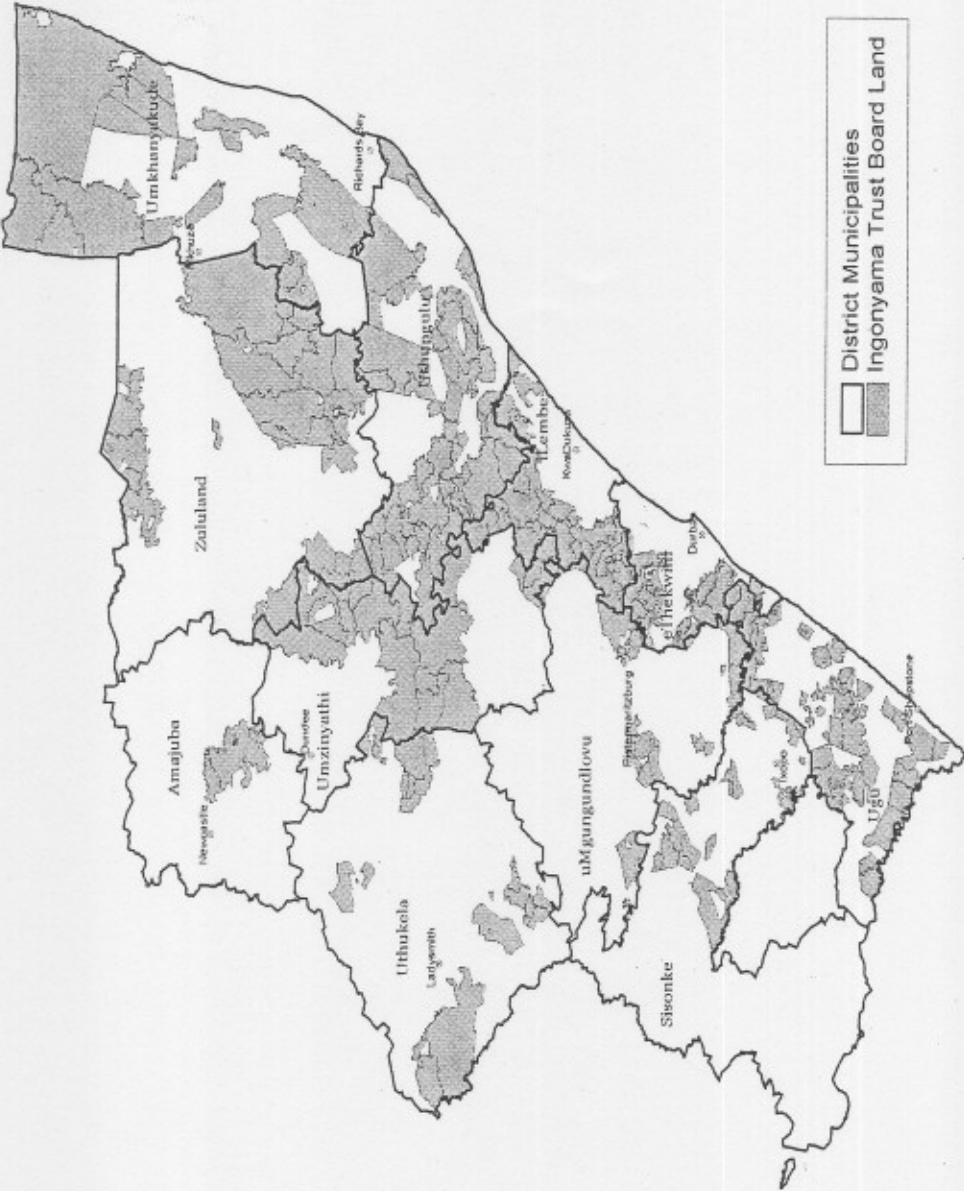
- Assessment Rates
- Change in Accounting Policy
- Performance Information
- Supply Chain Management System
- Materiality and Significance Framework
- Financial Management

OPERATIONS AND ACTIVITIES OF THE BOARD DURING THE YEAR

- **Amendments to Regulations**
- **Strategic Plan**
 - ✦ **Land Tenure Information System**
 - ✦ **Transfer of towns and State Domestic Properties**
 - ✦ **Registration of Land and consolidations**
 - ✦ **Communal Land Rights Act**
 - ✦ **Allocation of land for housing**
 - ✦ **Granting of leases**
 - ✦ **Disbursement of Funds to Traditional Authorities**
 - ✦ **Improvement of Debtor Control**

CONSTRAINTS AND FUTURE OUTLOOK

- Rating
- new premises
- review of strategic objectives
- review of policies



	District Municipalities
	Ingonyama Trust Board Land