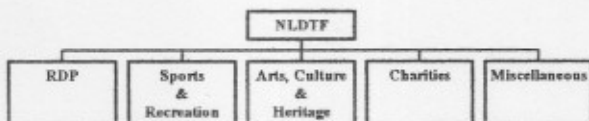


0617 061017pcarts



National Lottery Distribution Trust Fund
(NLDTF)

ALLOCATIONS FROM NLDTF



ARTS & CULTURE MISSION

- Production and creative works of theatrical, visual, musical, arts, film, design, architecture, dance and other creative potentials
- Research in Heritage, Indigenous Knowledge Systems, Environment and Arts
- Regeneration, conservation and maintenance of heritage sites
- Environmental education and capacity building

PRIORITIES

- Arts (Creative Development Grants, Festivals, Film, Public Art)
- Heritage
- Environment

ARTS AND CULTURE

- Theatre
- Visual Arts
- Literary Arts
- Film
- Music
- Script Writing
- Design & Choreography

CRITERIA

- Must be in the Priority area
- Equity & redress
- Nation Building
- Job Creation
- Skills Transfer
- Partnerships

WHO DOES NOT QUALIFY FOR LOTTERY SUPPORT

- Unregistered organisations
- Business enterprises
- Proprietary Limited (Public and Private)
- Unregistered community or community structures such as Burial Societies, Clubs, Associations etc.
- For Profit organisations

WHO QUALIFIES FOR SUPPORT AND CAN APPLY

- Non-Profit Trust
- Registered NPO
- Section-21 Company
- Statutory Body for projects

APPLICATION PROCESS

- Call for applications.
- Applications processed.
- Applications presented for adjudication.
- Applicants informed of decision and conditions, if any.
- Applicants return Grant Agreement and requested information.
- Grant approved for payment by Distributing Agency
- Grant paid by National Lotteries Board
- Applicant submits report on grant received.

NLDTF STATISTICS

1 April 2005 – 31 March 2006

Total Amount Allocated: R1,3 billion

Arts: R229m
Charities R626m
Sport: R410m
Miscellaneous Purposes: R 9m
RDP R 0

ARTS STATISTICS

1 April 2005 – 31 March 2006

Amount Available: R507m
No of grants: 192
Value of grants: R229m
Percentage allocated: 45%

No of applications received: 607
No of applications declined: 229
No of applications outstanding: 246

ARTS PROVINCIAL STATISTICS

1 April 2004 – 31 March 2006

No.	Province	Amount	%age
1	National Bodies	R 0,8m	0,3%
20	Eastern Cape	R30,3m	13,2%
4	Free State	R 2,6m	1,1%
70	Gauteng	R94,7m	41,4%
26	KwaZulu Natal	R31,5m	13,8%
8	Limpopo	R 5,9m	2,6%
5	Mpumalanga	R 4,3m	1,9%
3	Northern Cape	R11,6m	5,1%
6	North West	R 2,8m	1,2%
49	Western Cape	R44,3m	19,3%

ARTS APPLICATION STATISTICS

02 March 2006 – 31 March 2006

- No of allocations: 1 416
- Amounted allocated: R1,1 billion

PROBLEMS EXPERIENCED

High rate of rejection, especially from poorer provinces.

Reasons for rejection:

- Applicant not registered as a not-for-gain organisation
- No Audited Financial Statements
- No clear proposal.
- Request outside the mandate of the Distributing Agency
- Late application
- Not meeting with deadline for submitting outstanding information.

FUNDS AVAILABLE

1 April 2006 – 31 March 2007

Amount available: R2,1 billion

28%	Arts	R598,4m
45%	Charities	R961,7m
22%	Sport	R470,1m
5%	Misc.	R106,9m
0%	RDP	—



DISCUSSION
AND THANK YOU
