



**PRESENTATION ON THE DEVELOPMENT OF
THE “NEW GENERATION” CORRECTIONAL
FACILITY PROTOTYPES**

Department of Correctional Services

AIM

- **TO GIVE AN OVERALL VIEW OF A TYPICAL PROTOTYPE.**

INTRODUCTION

- * **The concepts utilized in the development of the “New Generation” prototype correctional facility have included:**
 - **Unit Management**
 - **Direct Supervision**
 - **Communal Cells**

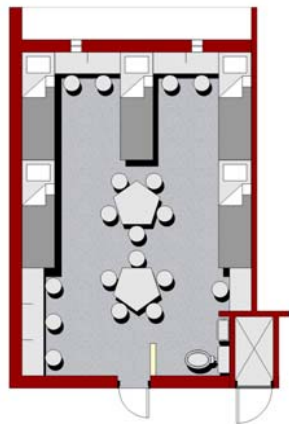
- * **The prototypes as developed were guided by the need to enhance the facility’s potential for rehabilitation**

- * The concept as developed incorporate all the recognized standards for humane incarceration.**
- * The designs reflect detailed space norms and standards incorporating recognized standards and local conditions**
- * The design concepts have been developed:**
 - (a) To achieve low Life-Cycle-Costing**
 - (b) To permit a variety of procurement methods**
 - (c) To permit rapid & expeditious construction**

DESIGN LAYOUTS

The Communal Cell

THE CELL



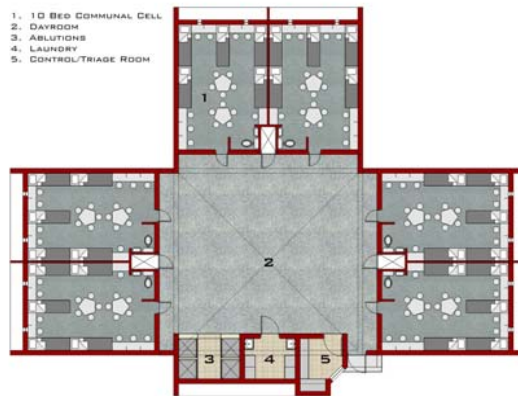
TEN BED COMMUNAL CELL
WITH SUB-DAYROOM



INTERIOR PERSPECTIVE OF COMMUNAL CELL

The Unit Management Module

THE MODULE



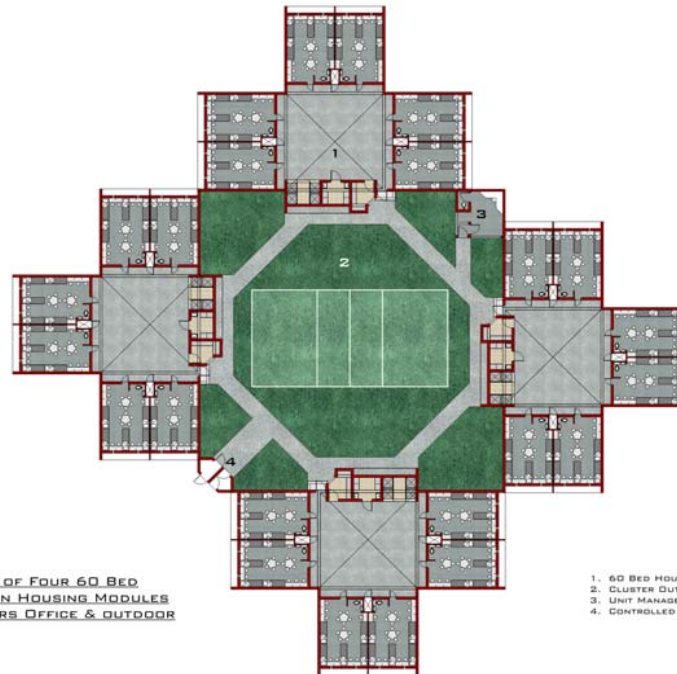
SIXTY BED DIRECT SUPERVISION HOUSING MODULE
WITH DAYROOM, ABLUTION, LAUNDRY, &
CONTROL/TRIAGE ROOM



EXTERIOR PERSPECTIVE OF DIRECT
SUPERVISION HOUSING MODULES

The Unit Management Cluster

THE UNIT MANAGEMENT CLUSTER



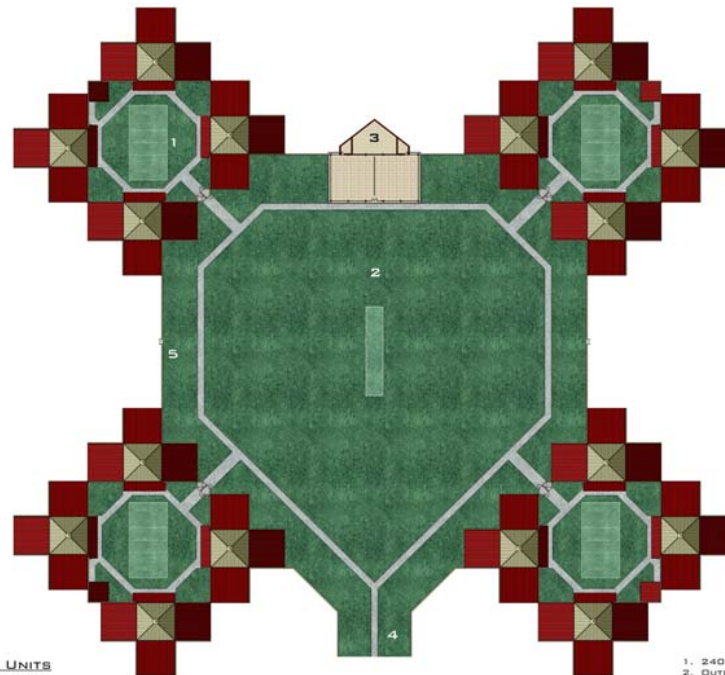
MANAGEMENT UNIT OF FOUR 60 BED
DIRECT SUPERVISION HOUSING MODULES
WITH UNIT MANAGERS OFFICE & OUTDOOR
RECREATION AREA



1. 60 BED HOUSING MODULE
2. CLUSTER OUTDOOR RECREATION AREA
3. UNIT MANAGERS OFFICE
4. CONTROLLED ENTRY

The Zone

THE ZONE



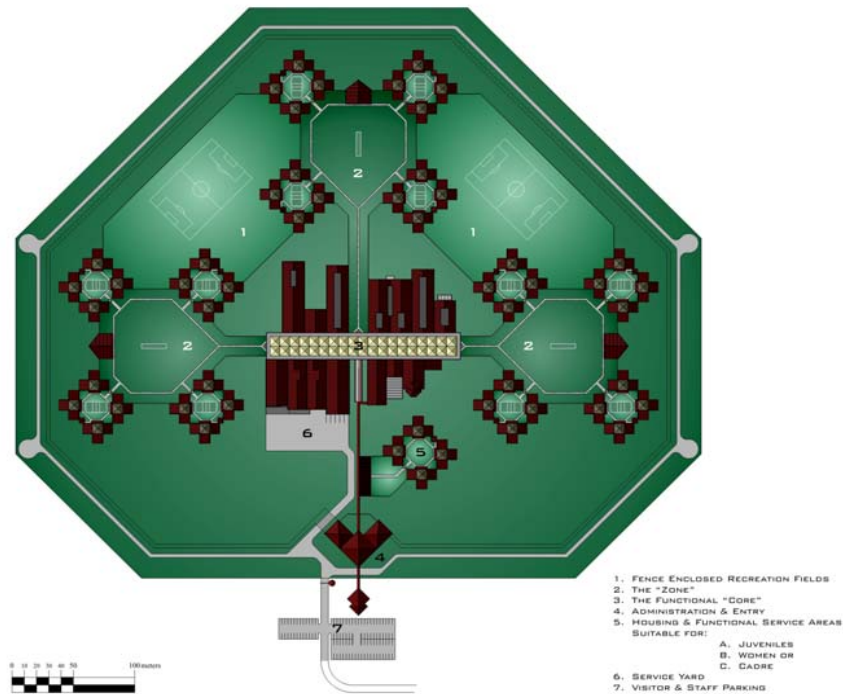
FOUR MANAGEMENT UNITS
FORMING A ZONE OF 960
BEDS WITH RECREATION AREA



1. 240 BED MANAGEMENT UNIT/CLUSTER
2. OUTDOOR RECREATION AREA
3. SHELTERED RECREATION AREA
4. CONTROLLED ACCESS TO ZONE
5. ENCLOSING WALLS

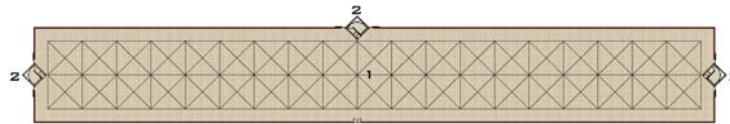
The Typical 3000 Bed Prototype

**3000 BED FACILITY
SITE PLAN**



"The Street"

THE "STREET"



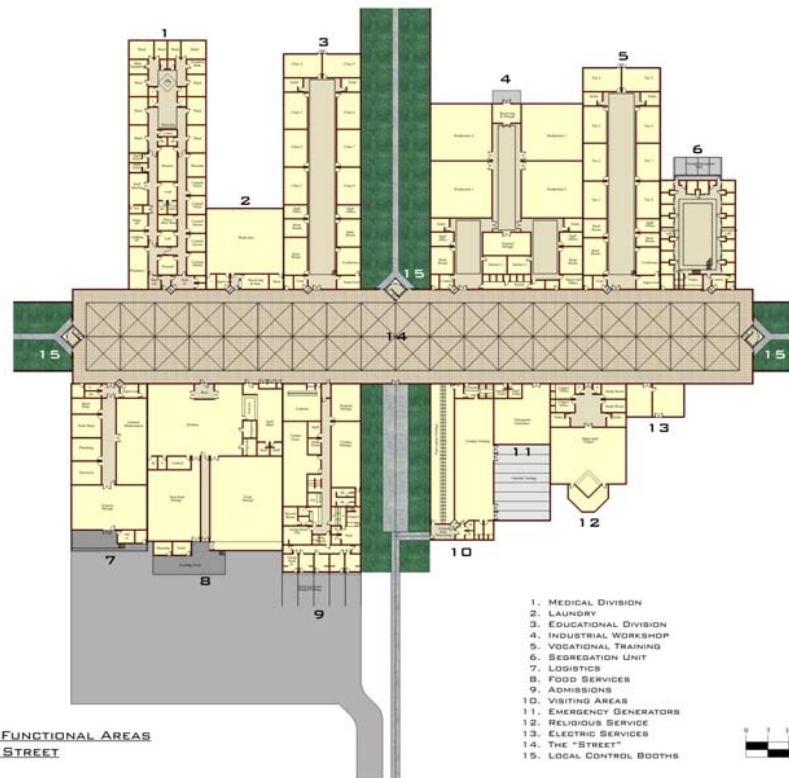
SERVICE CORE ACCESS AREA PERMITTING
CONTROLLED MOVEMENT TO & FROM
HOUSING AREAS & INTO FUNCTIONAL AREAS



1. THE "STREET"
2. LOCAL CONTROL BOOTHS

The "Street" and Functional Core

THE FUNCTIONAL CORE



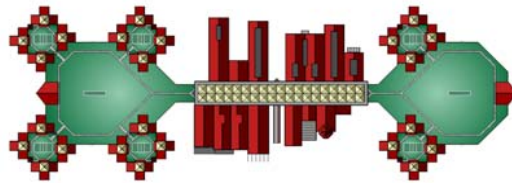
SERVICE CORE WITH FUNCTIONAL AREAS
ACCESS CONTROL & STREET

1. MEDICAL DIVISION
2. LAUNDRY
3. EDUCATIONAL DIVISION
4. INDUSTRIAL WORKSHOP
5. VOCATIONAL TRAINING
6. SEGREGATION UNIT
7. LOGISTICS
8. FOOD SERVICES
9. ADMISSIONS
10. VISITING AREAS
11. EMERGENCY GENERATORS
12. RELIGIOUS SERVICE
13. ELECTRIC SERVICES
14. THE "STREET"
15. LOCAL CONTROL BOOTHS

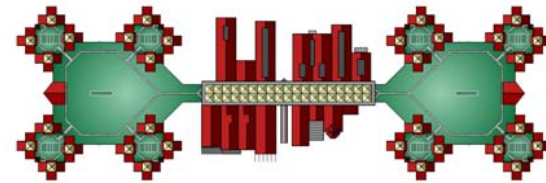


The Potential for Phased Development

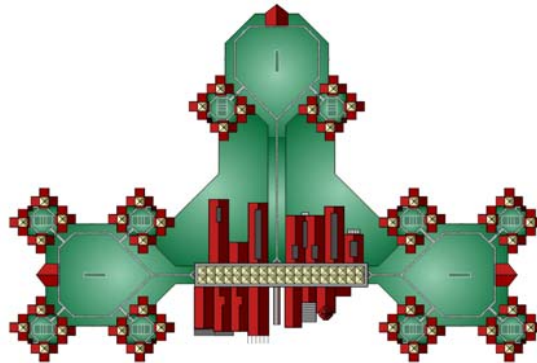
THE FACILITY CONCEPT PERMITS PHASED DEVELOPMENT
WITHOUT OPERATIONAL DISRUPTIONS



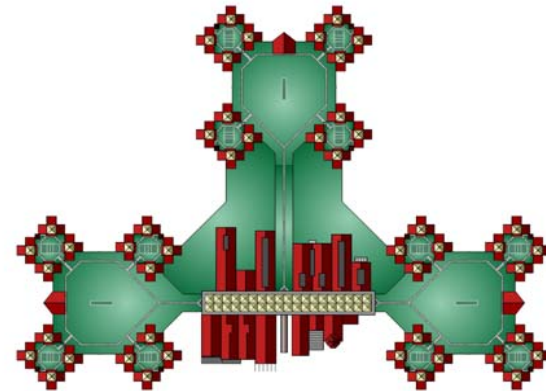
1500_Bed_Facility



2000_Bed_Facility



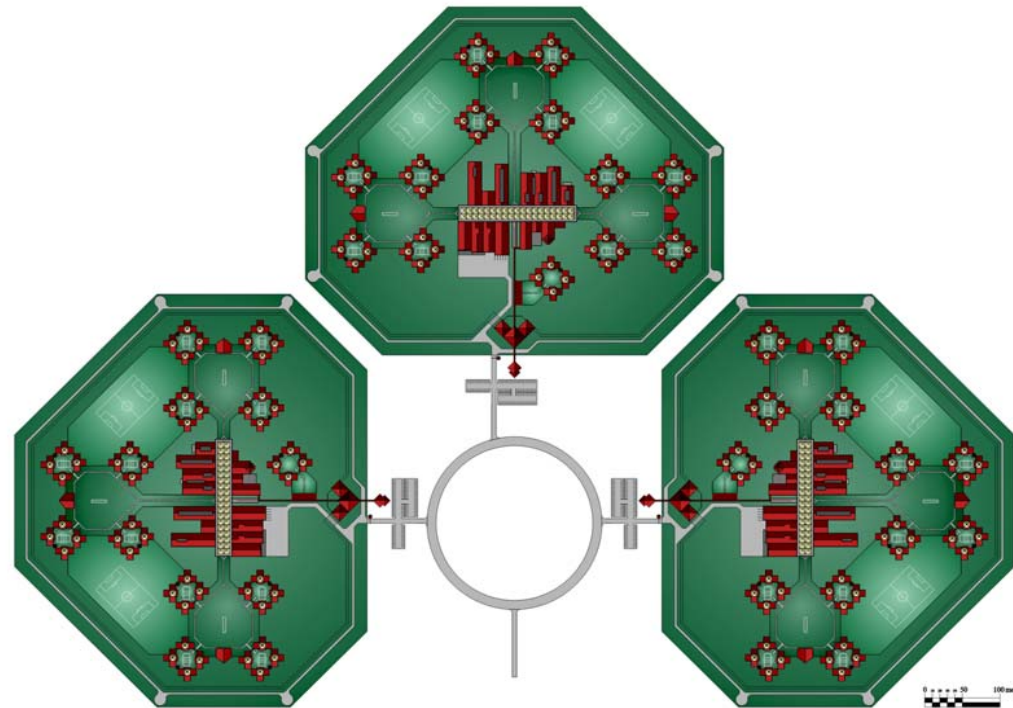
2500_Bed_Facility



3000_Bed_Facility

The Potential for Multiple Facilities Sharing a Common Site

GROUP OF THREE 3000 BED FACILITIES
SITE PLAN



Overall View of a Typical Prototype Design

PROTOTYPE AERIAL PERSPECTIVE



Perspective of Typical Dayroom at Housing Module

DAYROOM INTERNAL PERSPECTIVE



THANK YOU