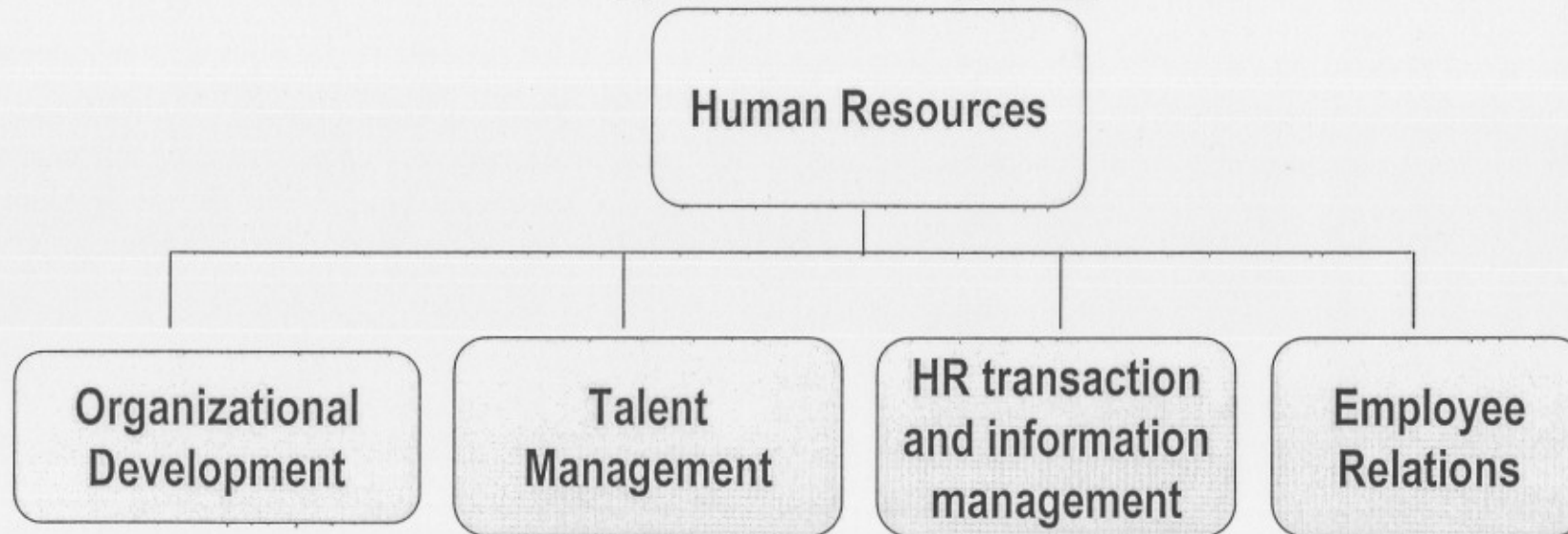


# REGIONAL OFFICE STRUCTURE



- Organizational effectiveness
- Employee Wellness programme.
- Transformation

- Recruitment
- Performance Management
- Human Resource Development.
- Leadership Development.
- Orientation and Integration.

- Labor Relations

**Build a Foundation  
for Success**

## **REPOSITIONING OF HUMAN RESOURCES**

- ✓ **Competency assessment.**
- ✓ **Retraining**
- ✓ **Redefinition of jobs**
- ✓ **Replacements of people**
- ✓ **Development and review of policies, systems  
and processes.**
- ✓ **On the job training**

## **CAPACITY BUILDING INTERVENTIONS**

- ✓ **Workshop to develop capability statement.**
- ✓ **Agreement with Cuba on technical capacity building.**
- ✓ **Placement of employees and unemployed graduates**
- ✓ **Secondment of engineers to assist with:**
  - ↳ **Operations and maintenance**
  - ↳ **Hydrological services**
  - ↳ **Water Quality management**

## **CAPACITY BUILDING INTERVENTIONS**

### **continued**

- ✓ **Technical short courses**
- ↳ **Partnership with University of the western Cape.**
  - **10 Ten students**
  - **Masters in integrated water resources management**
- ↳ **University of Limpopo**
- ↳ **Explore partnerships with other academic institutions.**

## **CAPACITY BUILDING INTERVENTIONS**

### **continued**

- ✓ **Executive coaching for senior managers**
- ✓ **Bursary scheme.**
- ✓ **Internship programme.**
- ✓ **Learnership programme**

# OUR DESTINATION



**THANK YOU**