

Mine Health and Safety Strategic Plan

16 May 2006

Presented By: G N Mojapelo
Acting Chief
Inspector of Mines

060516 p/min

Safety Fnce

Industry labour figure 441 (2005 (1%)

- 202 deaths in 2004 (rate worked) (16% 04)
- Injury rate per 1000 dec 4.04 in 2005 (8

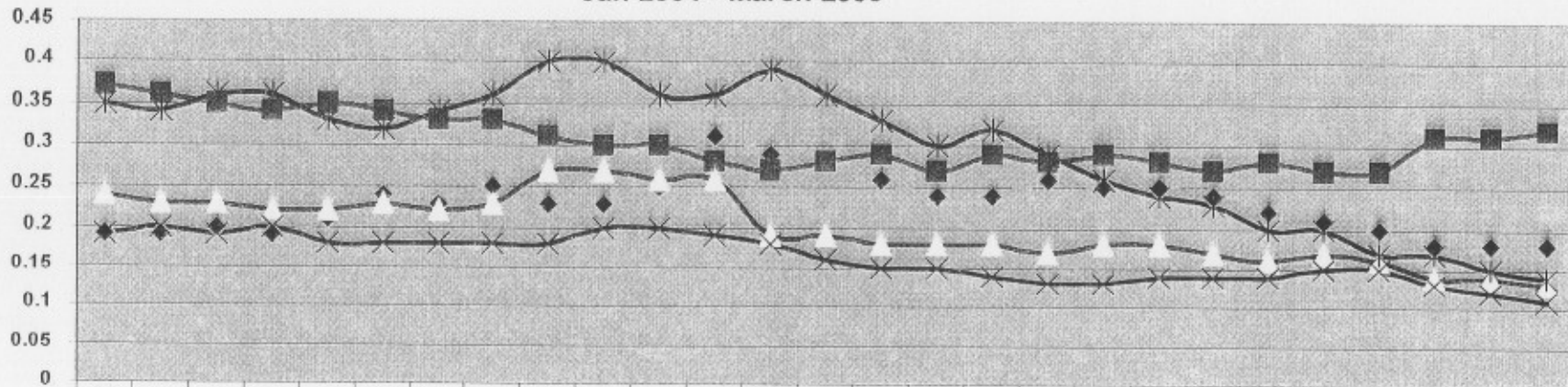
Safety Performance Fatalities

RSA

Main commodities

Fatality rates per million hours worked

Jan 2004 - March 2006



	04 JAN	FE	MA	AP	MA	JN	JL	AU	SE	OC	NO	DE	05 JAN	FE	MA	AP	MA	JN	JL	AU	SE	OC	NO	DE	06 JA	FE	MA
◆ Other mines	0.19	0.19	0.20	0.19	0.21	0.24	0.23	0.25	0.23	0.23	0.25	0.31	0.29	0.28	0.26	0.24	0.24	0.26	0.25	0.25	0.24	0.22	0.21	0.2	0.18	0.18	0.18
■ Gold	0.37	0.36	0.35	0.34	0.35	0.34	0.33	0.33	0.31	0.30	0.30	0.28	0.27	0.28	0.29	0.27	0.29	0.28	0.29	0.28	0.27	0.28	0.27	0.27	0.31	0.31	0.32
— Platinum	0.24	0.23	0.23	0.22	0.22	0.23	0.22	0.23	0.27	0.27	0.26	0.26	0.19	0.19	0.18	0.18	0.18	0.17	0.18	0.18	0.17	0.16	0.17	0.16	0.14	0.14	0.13
◆ Coal	0.19	0.2	0.19	0.2	0.18	0.18	0.18	0.18	0.18	0.20	0.20	0.19	0.18	0.16	0.15	0.15	0.14	0.13	0.13	0.14	0.14	0.14	0.15	0.15	0.13	0.12	0.11
◆ Diamonds	0.35	0.34	0.36	0.36	0.33	0.32	0.34	0.36	0.40	0.40	0.36	0.36	0.39	0.36	0.33	0.3	0.32	0.29	0.26	0.24	0.23	0.20	0.20	0.17	0.17	0.15	0.14

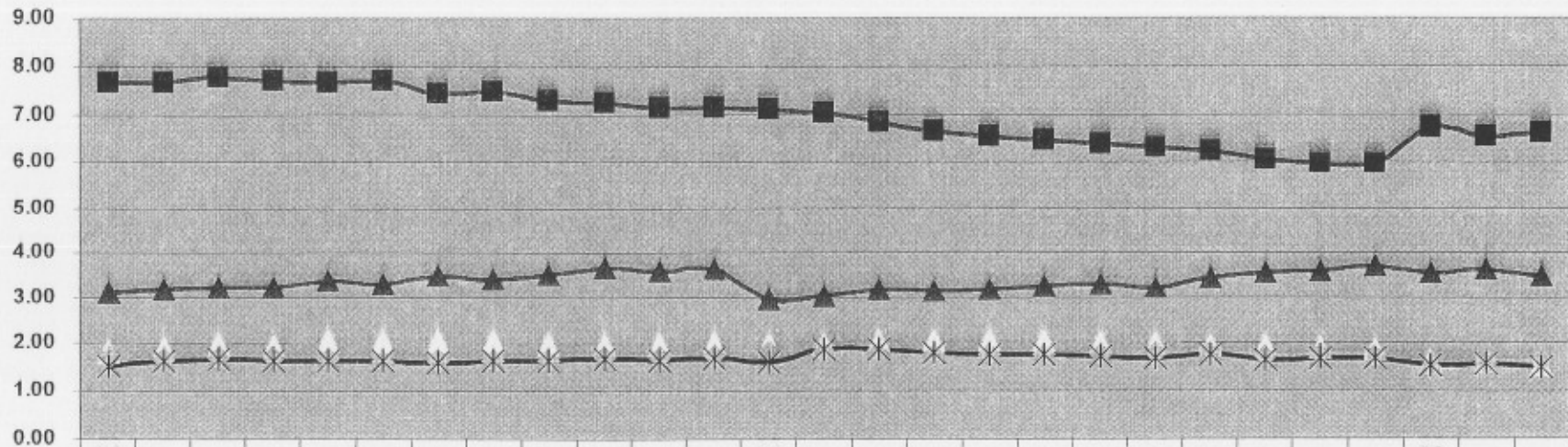
Safety Performance Injuries

RSA

Main commodities

Injury rates per million hours worked

Jan 2004 - March 2006

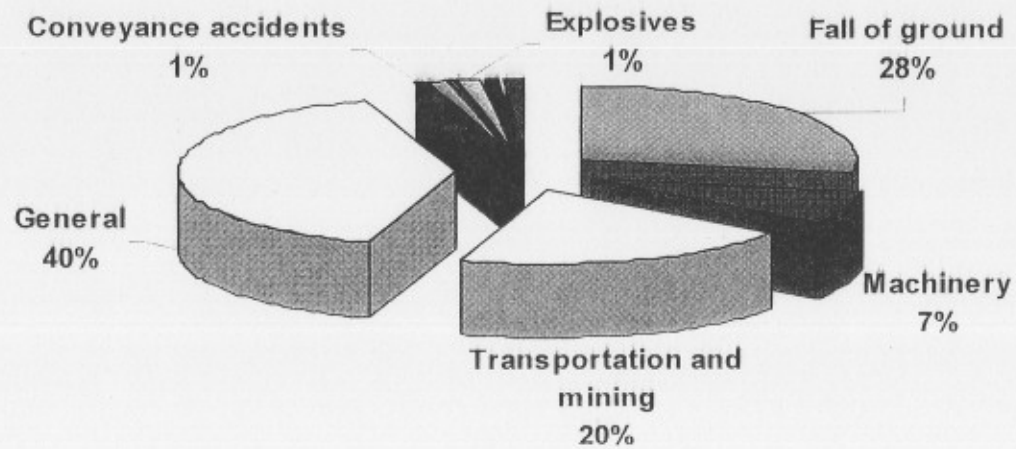


	04 JAN	FE	MA	AP	MA	JN	JL	AU	SE	OC	NO	DE	05 JAN	FE	MA	AP	MA	JN	JL	AU	SE	OC	NO	DE	06 JA	FE	MA
■ Gold	7.67	7.68	7.79	7.73	7.68	7.7	7.46	7.48	7.31	7.27	7.16	7.14	7.12	7.02	6.83	6.67	6.55	6.46	6.39	6.3	6.24	6.04	5.98	5.98	6.74	6.56	6.63
▲ Platinum	3.09	3.17	3.23	3.21	3.35	3.28	3.48	3.42	3.52	3.66	3.61	3.62	2.94	3.03	3.16	3.12	3.18	3.27	3.29	3.23	3.43	3.54	3.59	3.70	3.54	3.63	3.49
Other mines	1.81	1.89	1.97	1.94	2.06	2.04	2.06	2.03	1.98	1.96	1.95	2.01	1.95	1.98	2.06	2.03	2.06	2.03	1.99	1.95	1.92	1.91	1.88	1.86	1.59	1.59	1.53
○ Coal	1.69	1.67	1.69	1.70	1.66	1.60	1.62	1.62	1.64	1.70	1.69	1.74	1.83	1.79	1.79	1.74	1.73	1.74	1.73	1.77	1.78	1.71	1.75	1.72	1.45	1.56	1.57
* Diamonds	1.51	1.61	1.66	1.61	1.63	1.61	1.58	1.61	1.61	1.66	1.63	1.66	1.58	1.86	1.85	1.77	1.73	1.75	1.71	1.68	1.74	1.63	1.67	1.68	1.51	1.56	1.49

Fatalities per Classification

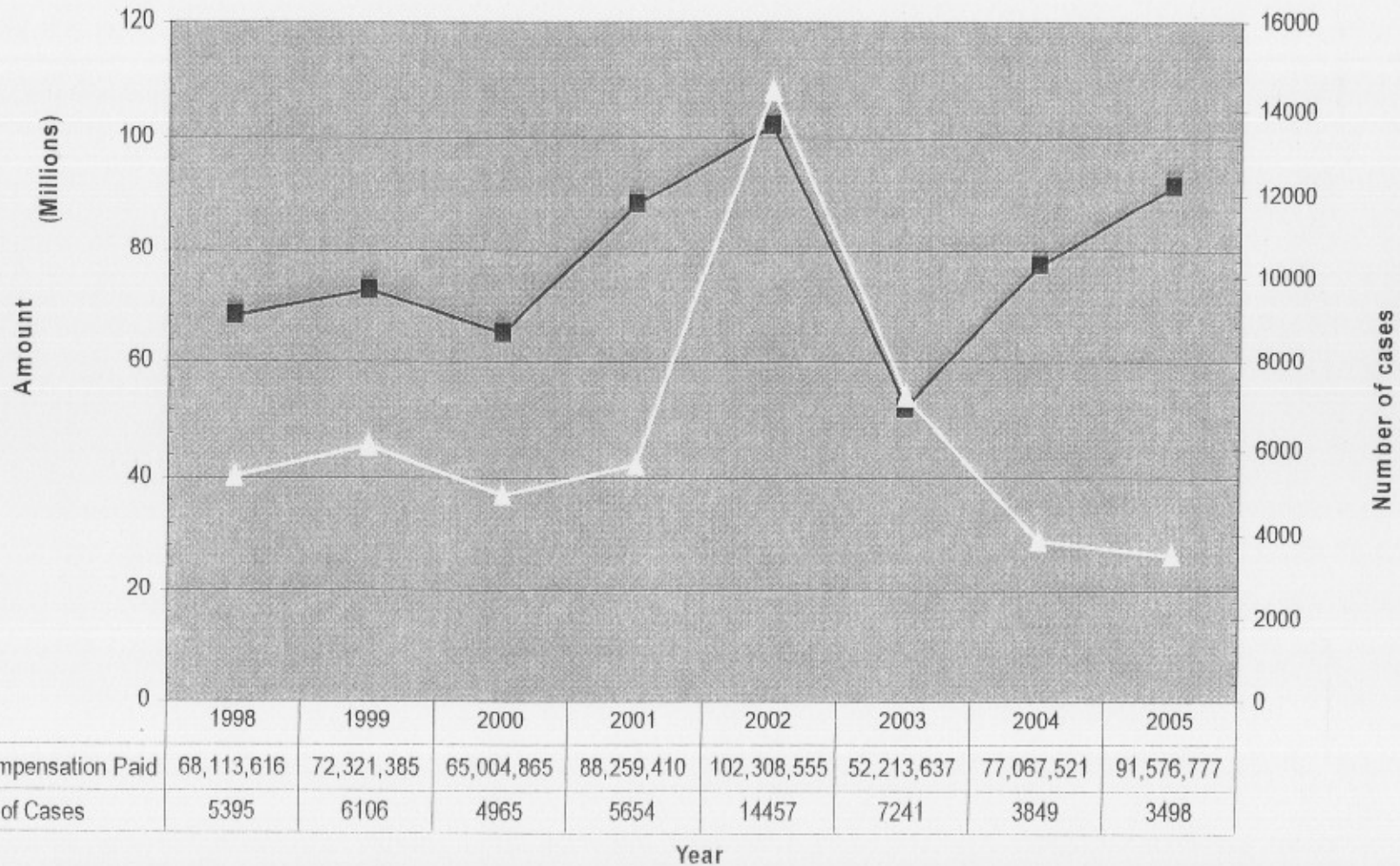
Percentage of accidents by classification

January - December 2005



NIHL Compensation – Rand Mutual

NIHL Compensation - Rand Mutual



Branch / Programme: Mine Health & Safety Enforcement

Inspections

- Planned 14 871 (2005/2006)
- Achieved 12 466 (84%)
- Planned 12 940 (2004/2005)
- Achieved 12 342 (95%)

Audits

- Planned 2 466 (2005/2006)
- Achieved 3 218 (138%)
- Planned 4 190 (2004/2005)
- Achieved 3 464 (83%)