

OVERVIEW

The Playhouse Company is led by a body of 9 council members who possess various areas of expertise ranging from arts practitioners, a judge of the High Court, a professor of accounting, a city councilor, business entrepreneurs and a priest. These members consist of:

- Mr Rodger Ashe
- Prof Ungandra Naidoo
- Mr Duma Ndlovu
- Mr Bongani Tembe
- Judge Leona Theron
- Ms Mina Lesoma
- Dr Rumilla Naran
- Dr Thandi Ndlovu
- Rev Dabula Thusi

The Playhouse Council is made up of various subcommittees, namely the executive, remunerations, finance, audit and procurement.

This institution has a full time staff compliment of 86 with numerous adhoc workers who are hired on contract basis based on varied needs of each production. The latter consist of artists, technicians and other production support staff. The various sections that make up this institution are grouped as follows :

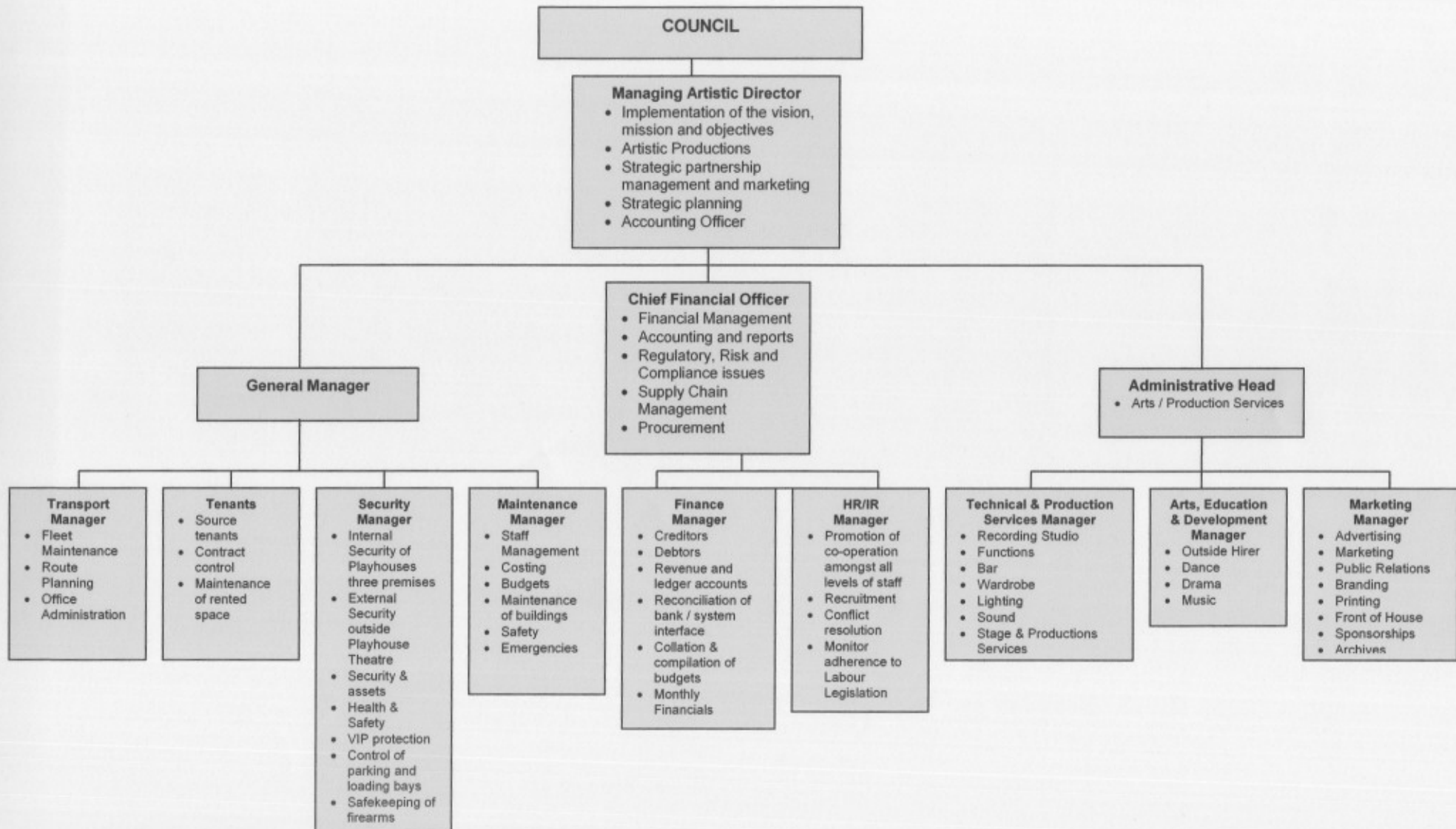
- **Arts**
responsible for the planning and staging of all artistic productions and events
- **Operations**
responsible for stage-production-technical services, costumes, sets, props, maintenance, security, cleaning services, transport, front of house and the recording studio
- **Support Services**
finance, human resources, corporate services

The Playhouse Company receives the bulk of its funding from all three tiers of government, namely eThekweni municipality, the department of Arts, Culture and Tourism in KwaZulu Natal and the national department of Arts and Culture. In addition to this, this institution has formed strategic partnerships with various companies and agencies to augment other sources of income.

IMMEDIATE FUTURE NEEDS

As the buildings were last renovated and upgraded extensively in 2005, The Playhouse Company is in dire need to upgrade its infrastrure, technical and stage equipment and the IT system. Part of this upgrade was done this year, but we need to complete this exercise in the nearest future. Please refer to the Capital Expenditure budget items enclosed herewith.

The Playhouse Company Organogram



Culture. The artistic plan is set to deliver artistic excellence, the artistic community in alignment to all the national and provincial priorities. The three spheres of Government are committed towards playing an integral role in the financial provisioning of the Playhouse Company

In pursuit of a highly representative and balanced artistic calendar, The Playhouse Company has an artistic programme that focuses primarily, but

to present and the following:

dance, drama and music
and Institutions in promoting the performing arts.

SOUTH AFRICAN THEATRE WORKS AND THE PLAYHOUSE - people with

ARTISTIC PLAN

TRUCK ACTIVITIES	
TRUCK ACTIVITIES/ MOBILE STAGE	A year long programme where various users, such as corporate companies, arts groups and municipalities hire and make use of the Playhouse Company's mobile stage facilities to mount medium scale productions/events e.g. product launches, concerts, awareness campaigns etc. The mobile stage offers immediate, accessible sound equipment and technical services especially in the rural and townships setting. Rentals are kept to minimum making it an affordable option for its many users.
EDUCATION AND DEVELOPMENT	
NEW STAGES	This is a platform to showcase new South African works e.g. plays, musicals, dance, etc. The primary focus is on the development of works that reflects contemporary South Africa's artistic and diversity heritage. Artists that are making a transition from amateur to professional status are accorded performance opportunities. Work such as African Queen, Maluju Zulu, Thulasizwe are prominent recent examples staged by the Playhouse. In addition, infrastructural support such as sets, props, costumes, stage and technical services as well as marketing of productions is given to each production. Approximately eight productions in Dance, Drama and Music genres are selected following an extensive review process. Artists engaged in these projects range in age from approximately 12 years old to 45 years old. Performers in these productions mainly come from several townships in KwaZulu-Natal, including Kwa-Mashu, Umlazi and Pietermaritzburg.
TEST DRIVE	Offers entry level artists the opportunity of working in a professional theatre environment and being exposed to the rudimentary processes of artists management. These free lunch hour shows, with a total number of approximately 600 artists take place during the months of February through to December each year. Artists engaged in these projects range in age from approximately 10 to 35 years old. A variety of music and dance style including Kathac, Indlamu, Iscathamiya, Maskandi, Gospel, etc are performed by artists coming from such areas as Inanda, KwaXimba, Port Shepstone, Hammersdale, Cato Crest and Tongaat.
HIP KULCHA	Successfully introduced in 2004, Hip Kulcha, the Playhouse Company's Youth Festival, is held in celebration of our national Youth Day. The Playhouse Company's Hip Kulcha programme is designed to create a platform for cultural expression about issues that are important to youth, the lead role players being young thinkers and performers themselves.
ARTS NETWORK FORUM	The Playhouse Company initiates a quarterly network forum for practicing artists to acquaint themselves of the latest developments and practices around issues of the arts. Key areas include the exchange of information on performance opportunities in other related industries such as tourism and industrial theatre. Topics include proposal writing workshops, budgeting, best audition practices and copyright issues.
SCHOOLS PROGRAMME	Mainstreaming of arts education in the curricula of our learners is an urgent priority. Through the study and practice of skills in the arts, young people acquire habits of discipline, and learn leadership life-skills such as the ability to think creatively and

IN-HOUSE

MUSIC, DANCE & DRAMA: PROFESSIONAL PRODUCTIONS	These are fully fledged professional productions that showcase the best in South African theatre. These have included in the past Mbongeni Ngema's musicals, Ronnie Govender's plays, ballets, operas, musicals etc where outstanding performances have been experienced.
THE SOUTH AFRICAN	This is an annual festival that features artistic work that highlight platform to showcase their work. The festival also features craft as well as from other country shows are highlights of the festival. Collaborations with various counties in Europe and India have produced outstanding results.
PRODUCTION	promoted. The Playhouse Company will support the development of a unique blend of the indigenous oral traditions of story telling and praise poetry with current fairytales in the public domain. Skilled artists such as Gcina Mhlophe are earmarked for these works that will include young performers ensuring the nurture of budding talents.

**FESTIVE SEASON
PRODUCTION**

As one of South Africa's leading performing arts centres, and as the premier theatre complex in KwaZulu-Natal, the Playhouse Company plays a core role in the cultural life the province. With the mass influx of visitors from inland and abroad during each Festival Season, the Playhouse Company produces a large-scale live entertainment with effective audience appeal that richly complements the overall entertainment package offering audiences a key attraction for tourists as well.

IN-ASSOCIATION PRODUCTIONS

**IN-ASSOCIATION
PRODUCTIONS**

The Playhouse Company uses every opportunity to collaborate with various arts companies and producers. This acts as another stream of income generated at box office in addition to grants received from various levels of government. Recent productions and concerts staged in association with the Playhouse Company included the Durban International Film Festival, Celebrate Durban, Durban Designer Collection, The African Renaissance Trust Concerts, collaborations with the Indian Consulate, Awesome Africa, The British Council and Siwela Sonke Dance Theatre to name a few.