

**PROPOSED BRANCH:  
NATIONAL AND SPECIAL INVESTIGATIONS  
2005**

**PAGE 2**

**PUBLIC PROTECTOR OF SOUTH AFRICA**

**DEPUTY PUBLIC PROTECTOR**

**SPECIAL INVESTIGATIONS  
UNIT**

Control Investigator(EM)  
2 Senior Investigator  
1 Secretary  
1 Administrative Assistant

**NATIONAL INVESTIGATIONS**

Control Investigator(EM)  
1 Secretary

**DIVISION  
INVESTIGATIONS  
NO I**

1 Chief Investigator (SM)  
1 Secretary  
10 Senior Investigator  
3 Investigator Assistant  
2 Administrative Assistant

**DIVISION  
INVESTIGATIONS  
NO II**

1 Chief Investigator (SM)  
1 Secretary  
10 Senior Investigator  
3 Investigator Assistant  
2 Administrative Assistant

**DIVISION  
INVESTIGATIONS  
NO III**

1 Chief Investigator (SM)  
1 Secretary  
10 Senior Investigator  
3 Investigator Assistant  
2 Administrative Assistant

**PROPOSED BRANCH: PROVINCIAL INVESTIGATIONS  
2005**

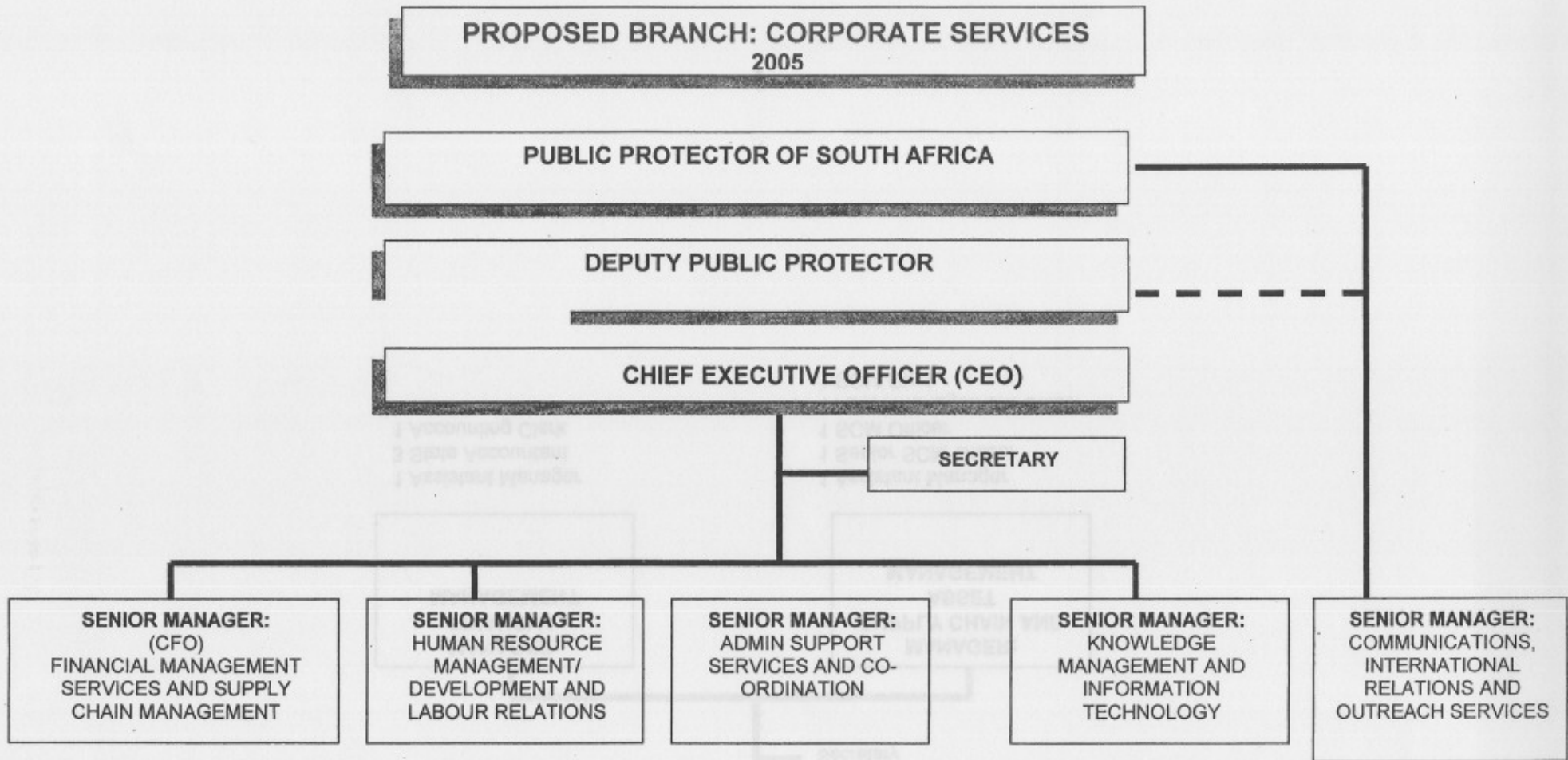
**PUBLIC PROTECTOR OF SOUTH AFRICA**

**DEPUTY PUBLIC PROTECTOR**

**EXECUTIVE MANAGER: PROVINCIAL CO-ORDINATION**

Senior Manager  
Assistant Manager  
2 Secretary





MANAGEMENT SERVICES  
FINANCIAL AND SUPPLY CHAIN  
SENIOR MANAGER (CFO)

(FROM PAGE 4)  
BRANCH: CORPORATE SERVICES

**BRANCH; CORPORATE SERVICES  
(FROM PAGE 4)**

**SENIOR MANAGER (CFO)  
FINANCIAL AND SUPPLY CHAIN  
MANAGEMENT SERVICES**

Secretary

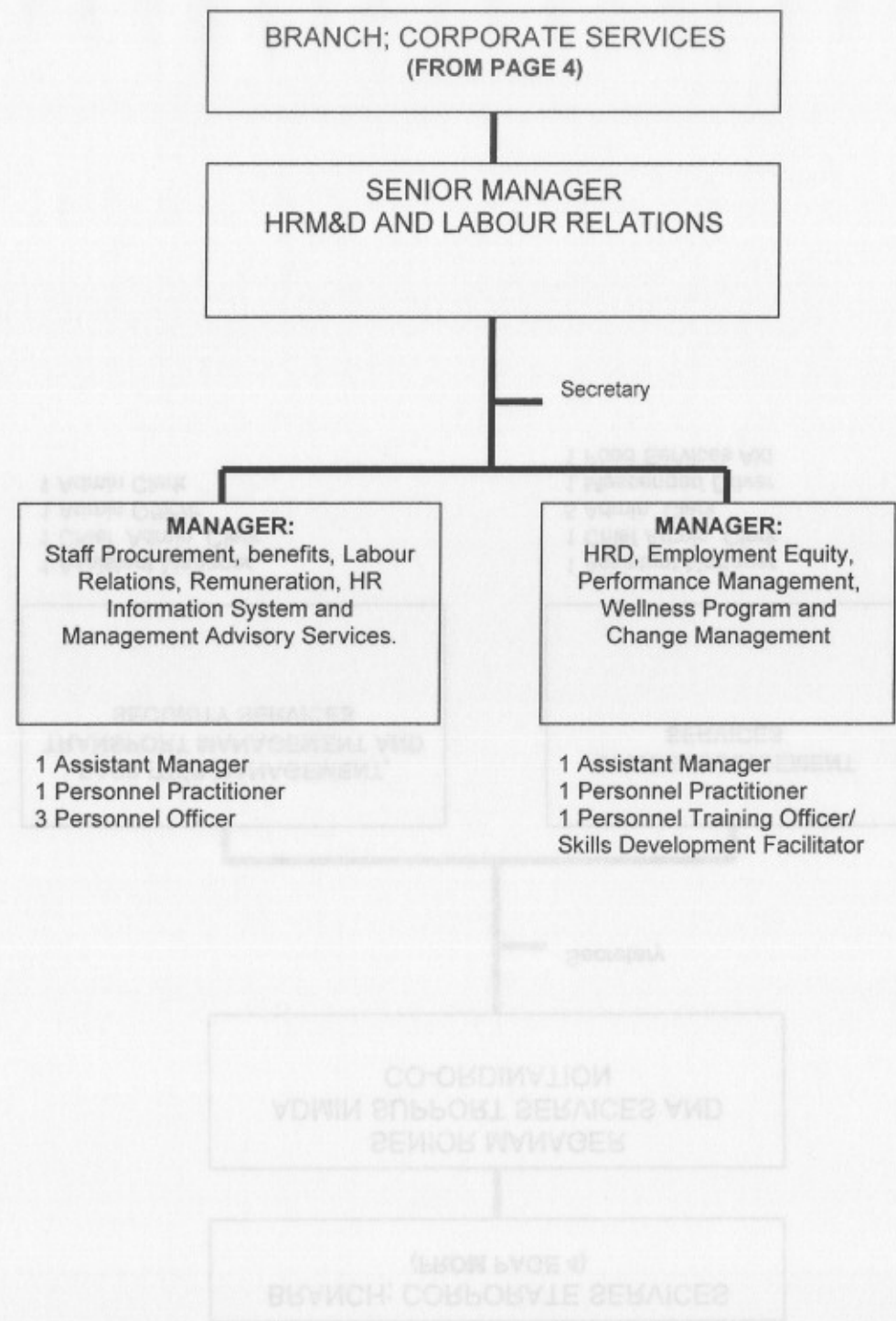
**MANAGER:  
FINANCIAL  
MANAGEMENT**

- 1 Assistant Manager
- 3 State Accountant
- 1 Accounting Clerk

**MANAGER:  
SUPPLY CHAIN AND  
ASSET  
MANAGEMENT**

- 1 Assistant Manager
- 1 Senior SCM Officer
- 1 SCM Officer
- 1 Asset Management Officer
- 1 SCM Clerk

**PROPOSED BRANCH: CORPORATE SERVICES**



BRANCH; CORPORATE SERVICES  
(FROM PAGE 4)

SENIOR MANAGER  
HRM&D AND LABOUR RELATIONS

Secretary

**MANAGER:**  
Staff Procurement, benefits, Labour Relations, Remuneration, HR Information System and Management Advisory Services.

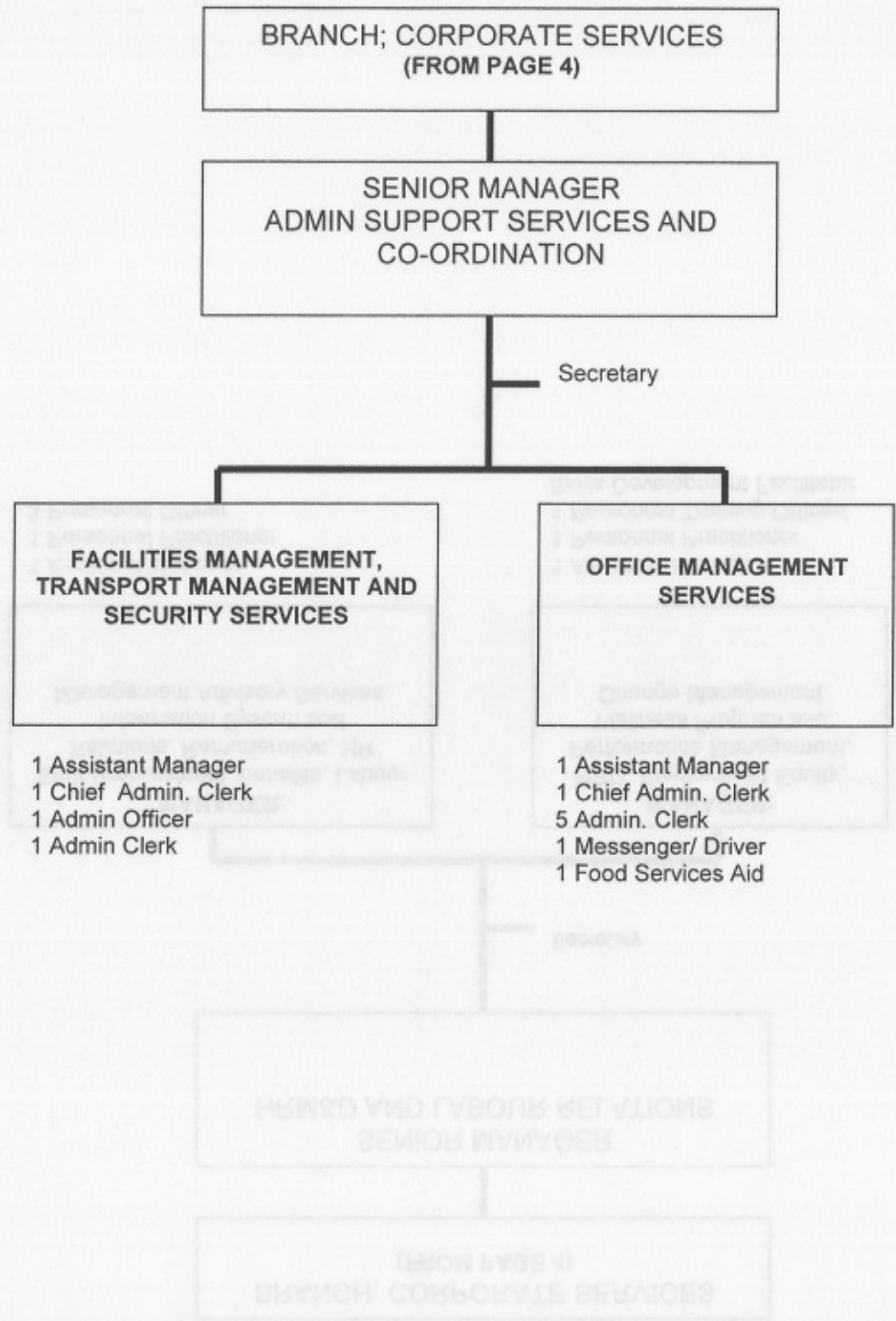
1 Assistant Manager  
1 Personnel Practitioner  
3 Personnel Officer

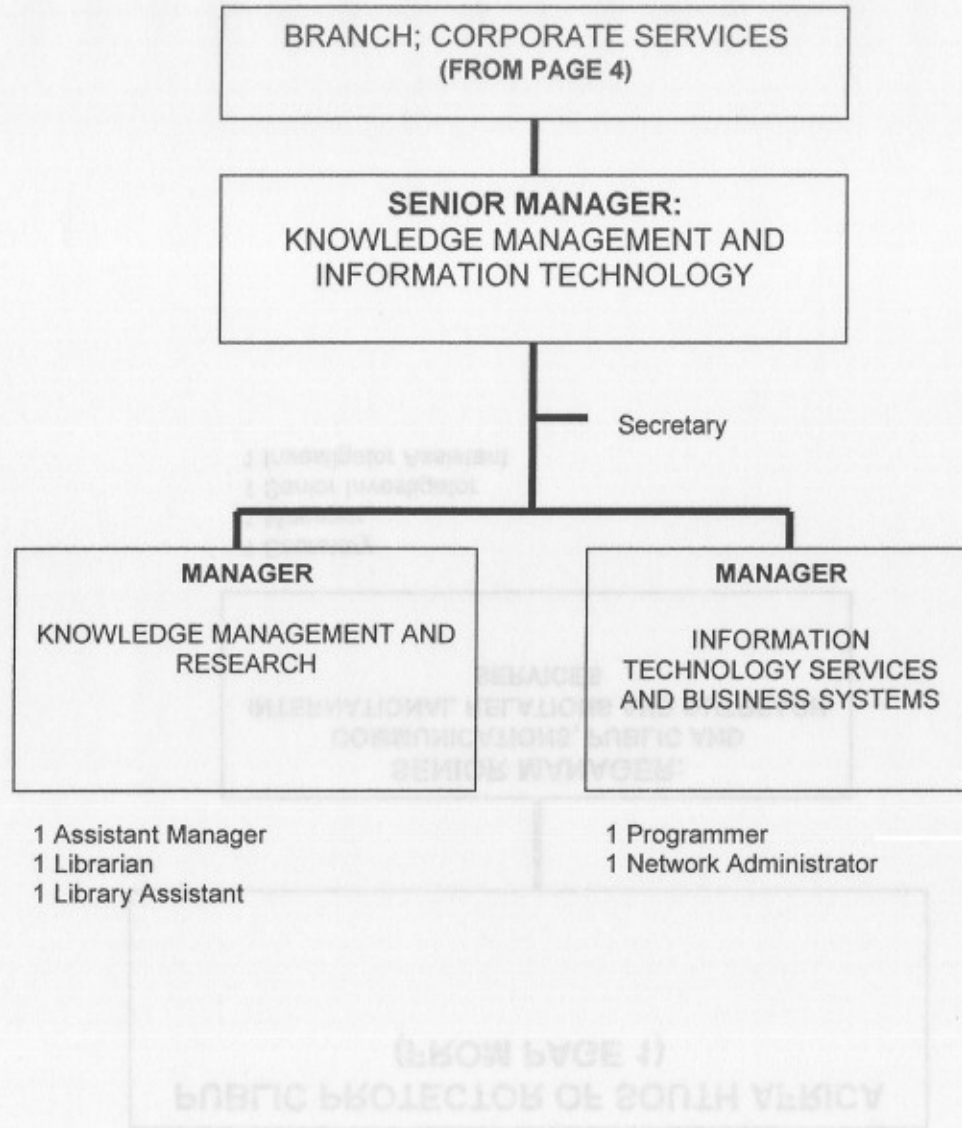
**MANAGER:**  
HRD, Employment Equity, Performance Management, Wellness Program and Change Management

1 Assistant Manager  
1 Personnel Practitioner  
1 Personnel Training Officer/  
Skills Development Facilitator

CO-ORDINATION  
ADMIN SUPPORT SERVICES AND  
SENIOR MANAGERS

BRANCH: CORPORATE SERVICES  
(FROM PAGE 4)





(FROM PAGE 4)  
PUBLIC PROTECTOR OF SOUTH AFRICA

**PUBLIC PROTECTOR OF SOUTH AFRICA  
(FROM PAGE 1)**

**SENIOR MANAGER:  
COMMUNICATIONS, PUBLIC AND  
INTERNATIONAL RELATIONS AND OUTREACH  
SERVICES**

- 1 Secretary
- 1 Manager
- 1 Senior Investigator
- 1 Investigator Assistant

INFORMATION TECHNOLOGY  
KNOWLEDGE MANAGEMENT AND  
SERVICES

BRANCH: CORPORATE SERVICES



ANNEXURE B

FINANCIAL IMPLICATIONS FOR THE PROPOSED BLUE PRINT POST ESTABLISHMENT OF THE OFFICE OF THE PUBLIC PROTECTOR FOR 2005/06

STRUCTURE	APPROVED				PROPOSED				
	Post Description	Nr. Approved	Salary Level	Cost p/unit	Total Cost	Nr. Proposed	Salary Level	Cost p/unit	Total Cost
<b>TOP MANAGEMENT</b>									
<b>PP's Office</b>									
Public Protector	1		822,000	822,000	0		822,000	-	
PA (DD/ Manager)	1	12	304,509	304,509	0	12	304,509	-	
Secretary	1	6	105,574	105,574	0	6	105,574	-	
<b>Communications</b>									
Senior Manager	1	13	453,147	453,147	0	13	453,147	-	
Secretary	1	4	77,369	77,369	0	4	77,369	-	
Manager	1	11	255,824	255,824	0	11	255,824	-	
Senior Investigator	0	12	344,265	-	1	12	344,265	344,265	
Investigator Assistant	1	6	105,574	105,574	0	6	105,574	-	
<b>DPP's Office</b>									
Deputy PP	1		797,000	797,000	0		797,000	-	
Security Manager	0	11	255,824	-	1	11	255,824	255,824	
Executive Secretary (ASD/ Asst. Manager)	1	9	180,906	180,906	0	9	180,906	-	
*Gratuity for PP and DPP not included in calculations									

INVESTIGATIONS	APPROVED				PROPOSED			
<b>Special Investigations</b>								
Control Investigator	1	14	533,754	533,754	0	14	533,754	-
Secretary	1	5	95,995	95,995	0	5	95,995	-
Senior Investigator	0	12	344,265	-	1	12	344,265	344,265
Administrative Assistant	0	4	77,369	-	1	4	77,369	77,369
<b>National Investigations</b>								
Control Investigator	1	14	574,998	574,998	0	14	574,998	-
Secretary	1	7	127,416	127,416	0	7	127,416	-
Senior Investigator (Researcher)	1	12	304,509	304,509	0	12	304,509	-
<b>Division (National) Investigations No. I</b>								
Chief Investigator	1	13	488,154	488,154	0	13	488,154	-
Secretary	1	4	77,369	77,369	0	4	77,369	-
Senior Investigator	10	12	344,265	3,442,650	0	12	344,265	-
Investigator Assistant	2	6	105,574	211,148	0	6	105,574	-
Administrative Assistant	0	4	77,369	-	2	4	77,369	154,738
<b>Division (National) Investigations No. II</b>								
Chief Investigator	1	13	453,147	453,147	0	13	453,147	-
Secretary	1	4	77,369	77,369	0	4	77,369	-
Senior Investigator	10	12	344,265	3,442,650	0	12	344,265	-
Investigator Assistant	2	6	105,574	211,148	0	6	105,574	-
Administrative Assistant	0	4	77,369	-	2	4	77,369	154,738
<b>Division (National) Investigations No. III</b>								
Chief Investigator	1	13	453,147	453,147	0	13	453,147	-
Secretary	1	4	77,369	77,369	0	4	77,369	-
Senior Investigator	10	12	344,265	3,442,650	0	12	344,265	-
Investigator Assistant	2	6	105,574	211,148	0	6	105,574	-
Administrative Assistant	0	4	77,369	-	2	4	77,369	154,738

MEMORANDUM FOR THE DIRECTOR OF THE BUREAU OF INVESTIGATION FROM THE CHIEF OF THE BUREAU OF INVESTIGATION

Provincial Investigations	APPROVED				PROPOSED			
Executive Manager	1	14	466,839	466,839	0	14	533,754	-
Secretary	0	4	77,369	-	1	4	77,369	77,369
Senior Manager	0	13	453,147	-	1	13	453,147	453,147
Secretary	1	4	77,369	77,369	0	4	77,369	-
Assistant Manager	0	9	180,906	-	1	9	180,906	180,906
*Although Executive Mgr post is approved at level 14 - it was filled at level 13 due to financial and other considerations								
<b>KZN</b>								
Senior Manager	1	13	488,154	488,154	0	13	488,154	-
Secretary	1	4	77,369	77,369	0	4	77,369	-
Senior Investigator	2	12	304,509	609,018	1	12	304,509	304,509
Investigator	1	11	294,326	294,326	0	11	294,326	-
Investigator	1	10	245,375	245,375	0	10	245,375	-
Investigator	1	9	198,086	198,086	0	9	198,086	-
Investigator	0	8	-	-	0	8	-	-
Investigator	0	7	-	-	0	7	-	-
Investigator	3	6	105,574	316,722	2	6	105,574	211,148
Investigator Assistant	2	6	87,507	175,014	0	6	87,507	-
Chief Administration Clerk	1	7	127,416	127,416	0	7	127,416	-
Administration Clerk	0	4	77,369	-	1	4	77,369	77,369
Administrative Assistant	3	4	77,369	232,107	0	4	77,369	-
Messenger/ Driver	1	4	77,369	77,369	0	4	77,369	-
Security Officer	1	4	77,369	77,369	0	4	77,369	-
<b>Gauteng</b>								
<b>JHB</b>								
Senior Manager	1	13	453,147	453,147	0	13	453,147	-
Secretary	1	4	77,369	77,369	1	4	77,369	77,369
Senior Investigator	3	12	304,509	913,527	3	12	304,509	913,527
Investigator	8	6	105,574	844,592	8	6	105,574	844,592
Investigator Assistant	2	6	87,507	175,014	2	6	87,507	175,014
Chief Administration Clerk	0	7	127,416	-	1	7	127,416	127,416
Administration Clerk	1	4	77,369	77,369	1	4	77,369	77,369
Administrative Assistant	1	4	77,369	77,369	1	4	77,369	77,369
Messenger/ Driver	1	4	77,369	77,369	1	4	77,369	77,369
Security Officer	1	4	77,369	77,369	1	4	77,369	77,369
				-				-



	APPROVED				PROPOSED			
<b>Kuruman Regional Office</b>								
Senior Investigator	0	12	344,265	-	1	12	344,265	344,265
Investigator	0	11	294,396	-	0	0	-	-
Investigator	1	10	245,375	245,375	0	10	245,375	-
Investigator		9	-	-			-	-
Investigator		8	-	-			-	-
Investigator		7	-	-			-	-
Investigator	0	6	118,869	-	2	6	118,869	237,738
Investigator Assistant	1	6	118,869	118,869	0	6	118,869	-
Administration Clerk	1	6	118,869	118,869	0	6	118,869	-
Administration Clerk								
Administration Clerk								
Administrative Assistant								
Auxiliary Services Assistant	1	4	95,995	95,995	0	4	95,995	-
<b>Vyburg Regional Office</b>								
Senior Investigator	0	12	344,265	-	1	12	344,265	344,265
Investigator	1	10	245,375	245,375	0	10	245,375	-
Investigator								
Investigator								
Investigator								
Investigator								
Investigator	0	6	118,869	-	1	6	118,869	118,869
Administration Clerk	1	6	118,869	118,869	0	6	118,869	-
Administration Clerk								
Administrative Assistant								
Auxiliary Services Assistant	1	3	65,918	65,918	0	3	65,918	-

MPUMALANGA	APPROVED				PROPOSED			
Senior Manager	1	13	488,154	488,154	0	13	488,154	-
Secretary	1	4	77,369	77,369	0	4	77,369	-
Senior Investigator	1	12	304,509	304,509	1	12	304,509	304,509
Investigator	0	11	-	-	0	11	-	-
Investigator	0	10	-	-	0	10	-	-
Investigator	1	9	198,086	198,086	0	9	198,086	-
Investigator	0	8	-	-	0	8	-	-
Investigator	0	7	-	-	0	7	-	-
Investigator	3	6	105,574	316,722	1	6	105,574	105,574
Investigator Assistant	2	6	89,100	178,200	0	6	89,100	-
Chief Administration Clerk	0	7	127,416	-	1	7	127,416	127,416
Administration Clerk	1	4	77,369	77,369	0	4	77,369	-
Administration Assistant	1	4	77,369	77,369	0	4	77,369	-
Messenger/ Driver	1	4	77,369	77,369	0	4	77,369	-
Security Officer	1	4	77,369	77,369	0	4	77,369	-
			-	-			-	-
<b>FREE STATE</b>								
Senior Manager	1	13	480,945	480,945	0	13	480,945	-
Secretary	1	4	77,369	77,369	0	4	77,369	-
Senior Investigator	2	12	304,509	609,018	1	12	304,509	304,509
Investigator	0	11	-	-	0	11	-	-
Investigator	0	10	-	-	0	10	-	-
Investigator	1	9	198,086	198,086	0	9	198,086	-
Investigator	0	8	-	-	0	8	-	-
Investigator	0	7	-	-	0	7	-	-
Investigator	5	6	105,574	527,870	1	6	105,574	105,574
Investigator Assistant	2	6	87,507	175,014	0	6	87,507	-
Chief Administration Clerk	0	7	127,416	-	1	7	127,416	127,416
Administration Clerk	1	4	77,369	77,369	0	4	77,369	-
Administration Assistant	2	4	77,369	154,738	0	4	77,369	-
Messenger/ Driver	1	4	77,369	77,369	0	4	77,369	-
Security Officer	1	4	77,369	77,369	0	4	77,369	-
			-	-			-	-

<b>EASTERN CAPE</b>	<b>APPROVED</b>				<b>PROPOSED</b>			
Senior Manager	1	13	480,945	480,945	0	13	480,945	-
Secretary	1	4	77,369	77,369	0	4	77,369	-
Senior Investigator	2	12	304,509	609,018	2	12	304,509	609,018
Investigator	3	11	294,326	882,978	1	11	294,326	294,326
Investigator	0	10	-	-	0	10	-	-
Investigator	2	9	189,283	378,566	0	9	189,283	-
Investigator	0	8	-	-	0	8	-	-
Investigator	1	7	141,461	141,461	0	7	141,461	-
Investigator	2	6	105,574	211,148	7	6	105,574	739,018
Investigator Assistant	2	6	89,100	178,200	0	6	89,100	-
Chief Administration Clerk	1	7	127,416	127,416	0	7	127,416	-
Administration Clerk	0	4	77,369	-	1	4	77,369	77,369
Administration Assistant	4	4	77,369	309,476	0	4	77,369	-
Messenger/ Driver	1	4	77,369	77,369	0	4	77,369	-
Security Officer	1	4	77,369	77,369	0	4	77,369	-
<b>LIMPOPO</b>								
Senior Manager	1	13	480,945	480,945	0	13	480,945	-
Secretary	1	4	77,369	77,369	0	4	77,369	-
Senior Investigator	2	12	304,509	609,018	1	12	304,509	304,509
Investigator	0	11	-	-	0	11	-	-
Investigator	0	10	-	-	0	10	-	-
Investigator	1	9	173,203	173,203	0	9	173,203	-
Investigator	0	8	-	-	0	8	-	-
Investigator	0	7	-	-	0	7	-	-
Investigator	4	6	105,574	422,296	3	6	105,574	316,722
Investigator Assistant	2	6	89,100	178,200	0	6	89,100	-
Chief Administration Clerk	0	7	127,416	-	1	7	127,416	127,416
Administration Clerk	1	4	77,369	77,369	0	4	77,369	-
Administration Assistant	1	4	77,369	77,369	0	4	77,369	-
Messenger/ Driver	1	4	77,369	77,369	0	4	77,369	-
Security Officer	1	4	77,369	77,369	0	4	77,369	-
<b>WESTERN CAPE</b>								
Senior Manager	1	13	488,154	488,154	0	13	488,154	-
Secretary	1	4	77,369	77,369	0	4	77,369	-
Senior Investigator	1	12	304,509	304,509	2	12	304,509	609,018
Investigator	1	11	275,641	275,641	0	11	275,641	-
Investigator	1	10	198,283	198,283	0	10	189,283	-
Investigator	0	9	-	-	0	9	-	-
Investigator	0	8	-	-	0	8	-	-
Investigator	0	7	-	-	0	7	-	-
Investigator	2	6	105,574	211,148	4	6	105,574	422,296
Investigator Assistant	2	6	89,100	178,200	0	6	89,100	-
Chief Administration Clerk	0	7	127,416	-	1	7	127,416	127,416
Administration Clerk	1	4	77,369	77,369	0	4	77,369	-
Administration Assistant	1	4	77,369	77,369	0	4	77,369	-
Messenger/ Driver	1	4	77,369	77,369	0	4	77,369	-
Security Officer	1	4	77,369	77,369	0	4	77,369	-

<b>NORTHERN CAPE</b>	<b>APPROVED</b>				<b>PROPOSED</b>			
Senior Manager	1	13	453,147	453,147	0	13	453,147	-
Secretary	0	4	77,369	-	1	4	77,369	77,369
Senior Investigator	1	12	304,509	304,509	1	12	304,509	304,509
Investigator	0	11	-	-	0	11	-	-
Investigator	0	10	-	-	0	10	-	-
Investigator	0	9	-	-	0	9	-	-
Investigator	0	8	-	-	0	8	-	-
Investigator	0	7	-	-	0	7	-	-
Investigator	2	6	105,574	211,148	3	6	105,574	316,722
Investigator Assistant	2	6	89,100	178,200	0	6	89,100	-
Chief Administration Clerk	0	7	127,416	-	1	7	127,416	127,416
Administration Clerk	1	4	77,369	77,369	0	4	77,369	-
Administration Assistant	1	4	77,369	77,369	0	4	77,369	-
Messenger/ Driver	1	4	77,369	77,369	0	4	77,369	-
Security Officer	1	4	77,369	77,369	0	4	77,369	-
<b>NEW REGIONAL OFFICES X 2</b>								
<b>Western Cape - George</b>								
Investigator	0	6	105,574	-	1	6	105,574	105,574
Admin. Clerk	0	4	77,369	-	1	4	77,369	77,369
Admin Assistant	0	4	77,369	-	1	4	77,369	77,369
<b>KZN- Siyabuswa</b>								
Investigator	0	6	105,574	-	1	6	105,574	105,574
Admin. Clerk	0	4	77,369	-	1	4	77,369	77,369
Admin Assistant	0	4	77,369	-	1	4	77,369	77,369



CORPORATE SERVICES	APPROVED				PROPOSED			
CEO	0	14	533,754	-	1	14	533,754	533,754
Secretary	0	4	77,369	-	1	4	77,369	77,369
<b>Financial Management</b>								
CFO	1	13	453,147	453,147	0	13	453,147	-
Secretary	1	4	77,369	77,369	0	4	77,369	-
			-	-			-	-
<b>Component: Financial Management Services</b>								
Manager (DD)	0	11	255,824	-	1	11	255,824	255,824
Assistant Manager (ASD)	1	9	180,906	180,906	0	9	180,906	-
State Accountant	3	7	127,416	382,248	0	7	127,416	-
Accounting Clerk	0	4	127,416	-	1	4	127,416	127,416
			-	-			-	-
<b>Component: Supply Chain and Asset Management</b>								
Manager (DD)	0	11	255,824	-	1	11	255,824	255,824
Assistant Manager (ASD)	0	9	180,906	-	1	9	180,906	180,906
Senior Supply Chain Management Officer	0	8	154,207	-	1	8	154,207	154,207
Supply Chain Management Officer	0	7	127,416	-	1	7	127,416	127,416
Asset Management Officer	0	7	127,416	-	1	7	127,416	127,416
Supply Chain Management Clerk	0	4	77,369	-	1	4	77,369	77,369
			-	-			-	-
<b>Human Resource Management</b>								
Senior Manager	1	13	453,147	453,147	0	13	453,147	-
Secretary	1	4	77,369	77,369	0	4	77,369	-
			-	-			-	-
<b>Component: Staff Procurement, LR, Remuneration, etc.</b>								
Manager (DD)	0	11	255,824	-	1	11	255,824	255,824
Assistant Manager (ASD)	1	10	223,712	223,712	0	10	223,712	-
Personnel Practitioner	1	7	217,416	217,416	1	7	127,416	127,416
Personnel Officer	3	4	77,369	232,107	0	4	77,369	-
			-	-			-	-
<b>Component: HRD, EE, Performance Management, etc</b>								
Manager (DD)	0	11	255,824	-	1	11	255,824	255,824
Assistant Manager (ASD)	0	9	180,906	-	1	9	180,906	180,906
Training Officer (SDF)	1	8	118,869	118,869	0	8	118,869	-
Personnel Practitioner	0	7	127,416	-	1	7	127,416	127,416
			-	-			-	-

	APPROVED				PROPOSED			
<b>Administrative Support Services and Co-ordination</b>								
Senior Manager	1	13	488,154	488,154	0	13	488,154	-
Secretary	1	4	77,369	77,369	0	4	77,369	-
				-				-
<b>Component: Facilities Management, Transport Management, etc</b>								
Assistant Manager (ASD)	1	9	180,906	180,906	0	9	180,906	-
Chief Administration Clerk	0	7	127,416	-	1	7	127,416	127,416
Administration Clerk	1	4	77,369	77,369	0	4	77,369	-
				-				-
<b>Component: Office Management Services</b>								
Assistant Manager (ASD)	0	9	180,906	-	1	9	180,906	180,906
Chief Administration Clerk	1	7	127,416	127,416	0	7	127,416	-
Chief Typist	1	7	127,416	127,416	0	7	127,416	-
Typist	7	4	77,369	541,583	0	4	77,369	-
Administration Clerk	5	4	77,369	386,845	0	4	77,369	-
Messenger/ Driver	1	4	77,369	77,369	0	4	77,369	-
Food Services Aid	1	4	77,369	77,369	0	4	77,369	-
				-				-
<b>Knowledge Management and Information Technology</b>								
Senior Manager	0	13	453,147	-	1	13	453,147	453,147
Secretary	0	4	77,369	-	1	4	77,369	77,369
				-				-
<b>Component: Knowledge Management and Research</b>								
Manager (DD) - Researcher	0	11	255,824	-	1	11	255,824	255,824
Assistant Manager (ASD)	0	9	180,906	-	1	9	180,906	180,906
Librarian	1	7	127,416	127,416	0	7	127,416	-
Assistant Librarian	1	4	77,369	77,369	0	4	77,369	-
				-				-
<b>Component: Information Technology Services and Busn. Systems</b>								
Manager (DD)	0	12	304,509	-	1	12	304,509	304,509
Programmer	0	8	154,207	-	1	8	154,207	154,207
IT Technician (Network Administrator)	0	7	127,416	-	1	7	127,416	127,416
				-				-
<b>TOTAL</b>	<b>275</b>			<b>50,288,752</b>	<b>131</b>			<b>21,421,847</b>

**EXPLANATORY NOTES:**

1. SEE NOTES MARKED \*
2. WHERE POSTS ARE FILLED, THE FINANCIAL IMPLICATIONS FOR APPROVED POSTS REFLECTS THE LEVEL OF THE INCUMBENT AT HIS/HER ACTUAL NOTCH AND SALARY LEVEL OR AN AVEARGE THEREOF WHERE MORE THAN ONE POST IS INDICATED.
3. IT SHOULD BE NOTED THAT IF VACATED ALL RELEVANT POSTS WILL BE FILLED ON AN ENTRY NOTCH AND/OR SALARY LEVEL BASIS.
4. THE CALCULATIONS ARE BASED ON PRE - JULY 2005 SALARY STRUCTURE.
5. THE PROPOSED POSTS SHOW ONLY THE NEW POSTS THE OFFICE INTENDS FILLING.